



Newsletter

Spring
March 2015

President's Message

Yep, it's closing time again. Oopsie!

No, I mean it is SPRING BREAK!

It's all in the way you look at it.

So grab your fav beverage and take a look at the fun activities suggested in this newsletter. We encourage you to get out – try some new things – go to new places. What stories will YOU have to tell on our playground when we all return for the 2015-2016 Season?

Huh???



You are going to do what?

As we wrap up our 8th season, we reflect on the year – and can't help but be incredibly excited and grateful – for our big improvements. Lots of concrete was poured this summer and everything fits in so well - the walks, ramp, and patio areas – they look as if they have always been there. Newer members may not realize what a very big deal these improvements really are. **Big!**

Consider this publication, created especially for you, your doggie magazine with loads of photos and stories about SWCDP members as well as other dog-centric, and hopefully interesting topics. We close out another great season – and know from member feedback that our members have enjoyed the playground and various amenities and events throughout the year.

We have a high percentage of 4-Legged members who are adopted; we know SWCDP is a strong supporter of rescue & adoption and so we have sprinkled related information throughout and encourage members to support these organizations. Also, we ask you to consider doing business with the various companies who have donated goods/services to SWCDP to make our events possible. And, we ask that you join us in thanking members who have donated their time, energy, skills, and great attitude to SWCDP.

And news. Please read pages 12 & 13 for details about your SWCDP membership; page 10 for info about SWCDP 10-Year Anniversary; page 32 about volunteer kudos and needs. Lots of turf work unfolding over the next couple weeks – hoping Mother Nature will be a team player. Have a great Spring Break. See 'ya in June. Tails waggin'.

Willow, Dobie Girl



**Warmest Regards,
Judi & Willow**

willow.nic07@yahoo.com



Break

Contents

In the spirit of what is possible....

President's Message.....	1
SWCDP Event Calendar.....	2
Spotlight – SWCDP Events.....	3
Events Around Town Calendar.....	4
MO Earthdogs Fun Days.....	5
Disc Doggin' – Watch Them Soar.....	6
APA and MO Humane Society Events.....	7
Our Fantastic Parks & Stray Rescue Special.....	8
Mallard Lake Trail & More.....	9
SWCDP 10 Year Anniversary.....	10
Wrigley Needs Help.....	11
GMM, Membership Process.....	12
Secretary Report.....	13
Rusty, Rainbow Bridge.....	14
Dooley, Puppy Needs Home.....	15
Maizie, One Lucky Girl.....	16
Jake, Rainbow Bridge.....	17
Sidewalk Dream Becomes Reality.....	18
Patio for Alternate Dog Park.....	19
Dexter, Rainbow Bridge.....	20
Show Me Your Tongue.....	21
Canine Good Citizen Designation.....	22
Behavioral Therapist Experiences.....	23-24
Be Safe! Pet Poison Hotline.....	25
SWCDP Playground Fun and Lost & Found.....	26-27
Maddi, Rainbow Bridge.....	28
Plight of the Spanish Galgo.....	29
Meet Arley and Moss.....	30
A Mother's Safe Haven.....	31
Volunteers, SWCDP Base.....	32

Reminiscing Past Events

Puppy Pool Party.....	33-34
Fall Celebration & Halloween Contest.....	35-39
Santa Claus Visits SWCDP.....	40
We Luv Our Volunteers Party.....	41-44





Take a deep breath . . .





We know – it happens every year – some of you may be hyper-ventilating just thinking about our renovation period. We will get through it, together. In the meantime, join us for some off-site fun while our new turf is growing.

Don't be sad - there are fun things to do!

SPRING
BREAK
FUN!

Off-Site Events – Coordinated by SWCDP

Mark Calendars – Print Page

Date & Time	Event	Location	Cost	Comments
Wednesday April 8 6:30-8:00 pm	Outdoor Dining Patio for Pooches 	Failoni's Restaurant 6715 Manchester Road (1/4 mi east of McCausland) www.failonis.com	Buy own Patio Specials	Group Walk – Meet at patio gate at 5:45 for on-leash walk through neighborhood prior to settling in for the patio fun – outside bar and plenty of tables
Saturday April 18 8:30am-2:00pm	Swim & Romp 	Broemmelsiek Dog Park 1615 Schwede Road (Hwy40/Winghaven, go south) http://www.sccmo.org/617/Broemmelsiek-Park	Free dog park	4.5 acres with pond, fenced, restroom on-site, plenty of room for dogs to run or swim.
Saturday April 18 8:30am-2:00pm	Pot Luck Picnic 	Broemmelsiek Dog Park 1615 Schwede Road (Hwy40/Winghaven, go south) http://www.sccmo.org/617/Broemmelsiek-Park	Bring a dish Hotdogs & water provided	Picnic area is walking distance from dog park. Let us know if you are coming – sign up, please www.surveymonkey.com/s/PICNICPLAYDATE41815
Wednesday April 29 6:30-8:00 pm	Outdoor Dining Patio for Pooches 	Onesto 5401 Finkman (at Macklind, east of Hampton) www.onestopizza.com	Buy own	Group Walk – Meet at patio at 5:45 for an on-leash group walk through neighborhood prior to enjoying the patio fun
Wednesday May 6 6:30-8:00pm	Outdoor Dining Patio for Pooches 	Failoni's Restaurant 6715 Manchester Road (1/4 mi east of McCausland) www.failonis.com	Buy own Patio Specials	Group Walk – Meet at patio gate at 5:45 for on-leash walk through neighborhood prior to settling in for the patio fun – outside bar and plenty of tables
May 8	Food Truck Friday	Tower Grove Park	\$5-8 range	See Next Page for Details
Saturday May 23 8:30-10:30 am	Swim & Romp 	Broemmelsiek Dog Park 1615 Schwede Road (Hwy40/Winghaven, go south) http://www.sccmo.org/617/Broemmelsiek-Park	Free dog park	4.5 acres with pond, fenced, restroom on-site, plenty of room for dogs to run or swim.
Sunday May 24 3:00-7:00 pm	Ballgame with Your Best Buddy 	TR Hughes Ball Park 900 TR Hughes Blvd O'Fallon, MO www.rivercityrascals.com	\$7.00 lawn ticket \$1 hotdogs	Dog friendly event, bring your pooch to the ballgame. Game Starts 4:05pm Playing Frontier Greys
Wednesday May 27 6:30-8:00pm	Outdoor Dining Patio for Pooches 	3500 Winehaus 3500 Watson Road (2 blocks from Pernod) www.winehaus.com	Buy own \$5 wine	Group Walk – Meet at patio gate at 5:45 for an on-leash group walk through neighborhood prior to settling in for the patio fun 



Come on, Join the Fun

**Wear your
SWCDP shirt or hoodie**
If you have one

April 18 - Saturday

8:30 am – 2:00 pm

Broemmelsiek Dog Park

Off-Leash



Swim and Romp

Directions: Schwede & Wilson Rd, off State Road DD. Take Hwy 40, exit at WingHaven (DD) interchange – south on Hwy DD approx 4 miles. Right on Schwede Road to the 2nd park entrance. About a 35 minute drive from our dog park.



4.50 acres of doggie fun. Large pond for doggie swimming and loads of grass and hills for running. This is a public and free dog park; consistently voted "one of best dog parks" in area. Bring bowl for clean water for your dog to drink. The covered pavilion has plenty of benches; and hose for washing your dog after play. Parking at entry gate; restroom is on site. **Call Broemmelsiek Hot Line 636/949-7475** before heading out – park closes when the grounds are wet.

On-Leash

May 8 - Friday

4:00 – 8:00 pm

Tower Grove Park



<http://www.saucemagazine.com/foodtruckfriday.php>

Food Truck Friday

We love this event. Bring your pooch (on leash) your lawn chair or blanket. 20+ food trucks, wide variety of flavors; you can also bring your own cooler. Really nice outdoor activity. Family and pet friendly, for sure. Free music by Tommy Halloran's Guerrilla Swing Band. *It is always recommended to arrive as early as you can – trucks will run out of food towards end of event.* **\$4 - 10 range, most between \$5-8**

Future 2015 Dates

June 12th- 4 to 8 pm
July 10th - 4 to 8 pm
Aug. 14th - 4 to 8 pm
Sept. 11th - 4 to 7:30 pm
Oct. 2nd - 3:30 to 7 pm

April 18 - Saturday

8:30 am – 2:00 pm

Broemmelsiek Park

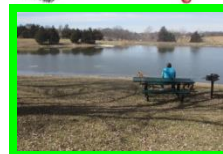
On-Leash



Pot Luck Picnic

Our picnic area is within walking distance from dog park so you can go back/forth throughout the day.

On adjoining pond (*fishing-no dog swim here*), it's a first come-first serve site; we plan to set up early and suggest you drop off your picnic stuff before heading to dog park to help us "claim our spot". Bring blanket and/or lawn chair, water for doggie. **FOOD-DRINK:** It's pot luck, **so bring a dish and share.** SWCDP will supply bottled water, hot dogs & buns, charcoal for the grill, paper plates & napkins. Bring whatever beverage you prefer; some may opt for a cold beer & more. **Hotdogs served at Noon.**



May 24 - Sunday

3:00 – 7:00 pm

TR Hughes Ball Park

On-Leash



Ballgame with Your Best Buddy

Game starts 4:05pm

\$7 Lawn Ticket

Pre-game: Dogs will parade on field; games, prizes, gifts. Demo with dog trainer and/or agility; adoption event via a couple shelters, too. Bring doggie water bowl and blanket for seating, also access to outfield bleachers. \$1 hotdogs; multiple, varied concessions.



Minor league baseball

River City Rascals

Frontier League, West Division



www.rivercityrascals.com



Things To Do

We are listing several dog-related events being held March thru June. SWCDP will not coordinate any of these – you are on your own. Suggest creating meet up opportunities with some of your dog park friends.

Oh, where will I go? What will I do?

Off-Site Events

Doggie Happenings Around Town



Date & Time	Event	Location	Cost	Comments
Sunday April 12 1:00-4:00pm	Earthdog Fun Day www.moearthdogs.org	Purina Farms 200 Checkerboard Drive, Gray Summit, MO 63039	\$10 entry Free to watch	PURINA FARMS DIRECTIONS: Hwy 44 West, Exit 253, go ¼ mile North on Hwy 100, left on Hwy MM, entrance is 1 mile on left
Saturday April 25 10:00am start	St L Disc Doggin Competition www.stlouisdiscdogs.com/	Purina Farms 200 Checkerboard Drive, Gray Summit, MO 63039		PURINA FARMS DIRECTIONS: Hwy 44 West, Exit 253, go ¼ mile North on Hwy 100, left on Hwy MM, entrance is 1 mile on left
Sunday April 26 9:00-11:00 am	Fast & Furious Run www.apamo.org/2015	Tower Grove Park Sons of Rest Pavilion	\$35 reg fee	Fundraiser-APA Located: Between Kingshighway & Grand; Magnolia & Arsenal
Saturday May 16 8:00am-1:00pm	Bark in Park http://member.hsmo.org/site/TR/Events/BarkinthePark?team_id=8620&pg=team&fr_id=1110	Forest Park Cricket Field Race at 9:00am	\$35 reg fee	Fundraiser-HSMO Entrance: Cricket & Grand Blvd
Friday May 22 6:30pm, check web	Earthdog Memorial Bash www.moearthdogs.org	Purina Farms 200 Checkerboard Drive, Gray Summit, MO 63039	\$10 entry Free to watch	PURINA FARMS DIRECTIONS: Hwy 44 West, Exit 253, go ¼ mile North on Hwy 100, left on Hwy MM, entrance is 1 mile on left
Saturday May 23 All day, check web	Earthdog Memorial Bash www.moearthdogs.org	Purina Farms 200 Checkerboard Drive, Gray Summit, MO 63039	\$10 entry Free to watch	PURINA FARMS DIRECTIONS: Hwy 44 West, Exit 253, go ¼ mile North on Hwy 100, left on Hwy MM, entrance is 1 mile on left
Sunday May 24 All day, check web	Earthdog Memorial Bash www.moearthdogs.org	Purina Farms 200 Checkerboard Drive, Gray Summit, MO 63039	\$10 entry Free to watch	PURINA FARMS DIRECTIONS: Hwy 44 West, Exit 253, go ¼ mile North on Hwy 100, left on Hwy MM, entrance is 1 mile on left
Saturday June 6 9:00am	C.A.R.E. Run/Walk http://www.onestoprace.com/search/event.aspx?id=31361	Creve Coeur Park 13725 Marine Avenue Maryland Heights, MO	\$25 reg fee	Fundraiser- CARE 270 West, Dorsett Rd exit, turn left, park entrance right
Saturday June 13 Game: 3:10pm	Pooches in Ballpark http://stlouis.cardinals.mlbb.com/schedule/promotions.jsp?c_id=stl	Busch Stadium 700 Clark Street St Louis, MO 63102	\$40 Cardinals vs Royals	Purina Event Tickets on sale now, they go fast, limited tickets!



Missouri Earthdogs

DOWN AND DIRTY SINCE 1997

www.moeearthdogs.org

Fun Days!

Fun Days are a chance for your earthdog to experience the excitement of working in the earth in our specially designed Go-to-Ground (GTG) tunnels. Over the course of the Fun Day you will be instructed by our knowledgeable club members on how to introduce your dog to a tunnel, when to encourage and when to remain silent, how to proceed after mastering the short tunnel, and when to get packed for the next trial! For some dogs it's easy; others are a little reticent- but don't give up. Walk away and take a break from the action and come back a little later. You can have fun at the tunnels as many times as you like for as long as the Fun Day is in progress.

We also race at our Fun Days. It's loud, it's frantic, it's intimidating but once your dog gets the hang of it there's no stopping him. Racing takes place on our infamous "Hill of Sorrows". For the safety of our catchers in the catch pen and other racing dogs, muzzles are required but don't buy one before coming. We have several different styles to choose from; happy to loan you one for the race.

Racing rotates between "like" or similar dogs racing against each other. For example, pups race against each other, experienced racing dogs race against each other, dachshunds race against each other. There are two types of races: flat and hurdles. Once everyone has had several runs in the flats, the hurdles are put on the course and we begin rotating groups again.

Racing can be very intimidating due to several factors: the noise level of barking dogs and the excitement they generate, the nearness of strange dogs, entering a starting gate, and not seeing the lure on the track ahead of them (the dog thinks "what's the point of this"?).

Get more event information here

<http://www.moeearthdogs.org/fundays.htm>

Fun Days

March 22

April 12

May Bash

May 22

May 23

May 24



DISC-CONNECTED K9's



Meet Zorro – World Champion

Disc-Connected K9's performed in St Louis in March at the annual Builders Home & Garden Show. The show was amazing, especially Zorro – and the lead guy, Lawrence, even more amazing. A big heart.

Based in Florida, The Disc-Connected K9s began rescuing dogs in 1992 and since that time, have rescued, covered veterinary costs, trained basic obedience (when necessary) taught disc (Frisbee) skills, and then qualified and adopted these dogs into new homes. Through all these years, hundreds of dogs and countless hours of training, they have never once ever charged anyone one cent of money. The program is 100% free for everyone involved in the program.

Typically specialize in the working breeds; i.e. Border Collies, Australian Shepherds, Australian Cattle Dogs, Jack Russells and hyper-active mixed breeds. The more a dog is bouncing off the wall, the better candidates they make for their program but they prefer to accept dogs under two years of age. They do ask that all current Vet records be provided so that they may provide a health history to their sponsoring Vet Hospital. Their dogs perform all over the country; around the world.

<http://www.k9frisbee.com/>

Donations are always welcomed

St. Louis DISCDOGS

Local Fun Group

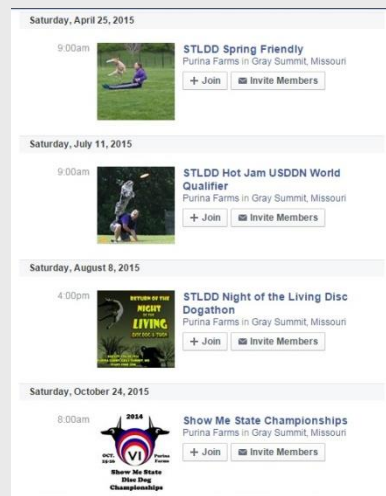
The St. Louis Disc Dog Club began 17 years ago to create a safe, fun environment for disc-loving canines and their dog-loving owners. Their goal is to teach and promote the **sport of disc doggin'** and be a resource for dog related news and events throughout the greater St. Louis area. They facilitate training sessions for current and potential new members alike; hold demonstrations, and host several disc-dog competitions throughout the year.

Most of their communication happens via their new Facebook page – Search on FB and join their page. Check it out.

www.stlouisdiscdogs.com/

2015 Season has begun!

2015 Competitions



Meet Riley – a St Louis Dog – Loves to Perform

A Disc-Connected K9 rescue who entered their training program, a high strung, unfocused canine who found a way to channel his energy. Happy!



**Run
Walk
Raise Money**

Annual fundraisers for two St Louis shelters dedicated to saving the lives of pets in need. Help fund their work in the community. Enjoy an outside activity with your lucky 4-Legged.

April 26, 2015

*Join the original STL dog-friendly
5K and 1-Mile Walk!*



**Tower Grove Park
Sons of Rest Pavilion
Race starts at 9 a.m.
registration opens at 7:45
\$30 registration by April 22
\$35 April 23-26
Free t-shirt and goody bag**

Register at www.apamo.org/2015

Raising Dollars for Dogs

May 16, 2015 • Forest Park



In its 22nd year, Purina One has partnered with Humane Society of Missouri, and will head up the primary elements of the event. Bark in the Park net proceeds go to HSMO, for operating expenses with heavy focus on the HSMO Animal Abuse Task Force.

While we do not have a SWCDP volunteer leader to lead the walk – we do have a page set up for SWCDP donations and participation in **Bark in the Park**. If you are going – please sign up under SW City Dog Park, or use the link below.

http://member.hsmo.org/site/TR/Events/BarkinthePark?team_id=8620&pg=team&fr_id=1110



Fun
For
All

Tickets on sale now!

**Tickets in limited release
and sell out quickly.**

Pre-game parade, costume
contest, games, prizes, more.

Cardinals vs Royals

Game Time: 3:10 pm

http://stlouis.cardinals.mlb.com/schedule/promotions.jsp?c_id=stl

June 13, 2015





We Have Fantastic Parks

Once SWCDP new season opens – what kind of Spring Break stories will your 4-Legged have to tell on the playground? Most of our 4-Leggeds love new smells, sights, sounds, “going” places – treat your doggie – and yourself to a new park or trail adventure.

Get out there and have some fun!

St Louis City Parks

<https://stlouis-mo.gov/government/departments/parks/parks/browse-parks.cfm>

St Louis County Parks

<http://www.stlouisco.com/ParksandRecreation/Trails>

Missouri State Parks

<http://mostateparks.com/page/57758/st-louis-region>

Great River Greenway

<http://www.greatriversgreenway.org/>

Katy Trails

<http://www.bikekatytrail.com/side-trails.aspx>

Check out area
Parks & Trails

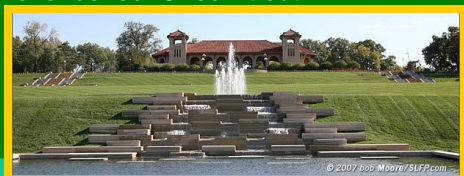


Forest Park St Louis Treasure

**When is the last time
you visited Forest Park?**

How about your 4-Legged?

Break out of your comfort zone and take your doggie for an adventure, walking the 1,371 acres – always something new for your best pal to investigate. Located so close to most SWCDP members, but sometimes overlooked. Check it out.



BOATHOUSE FOREST PARK

Pet Policy – On-Leash

Socially-friendly dogs welcome, outdoor dining only.
Please be mindful of those around you.

After a nice, long walk thru Forest Park, take a break on the patio overlooking the Post Dispatch Lake. At the Boathouse, pets are warmly welcomed and are usually given a water bowl, and sometimes a treat, too.

Fall hours through April;
Summer hours begin in May.

Check the website for menu, hours, and upcoming events. And, coming later this summer – remember the
**Paddle with
Your Pooch** event.



www.boathouseforestpark.com/restaurant.php

*Still Looking
For Places To Go?*



Creve Coeur Lakehouse

Doggies Allowed on Patio



On Mallard Lake

2160 Creve Coeur Mill Road, St. Louis, Missouri 63146

Phone: 314-576-7200

http://www.cclakehouse.com/Lakehouse_Home.asp

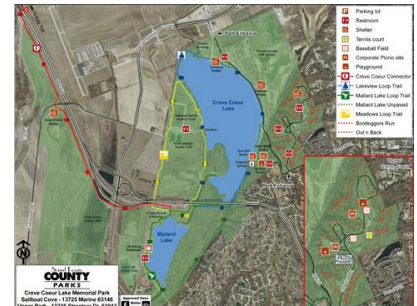
Directions from SWCDP neighborhoods

I-44 West, to 270 West, to Olive exit. Turn left (west) on Olive for approx. 4 miles; turn right (North) on Creve Coeur Mill Road. For approx. 4 miles. Destination is approximately 20 miles....easy trip.

Creve Coeur Park

<http://www.stlouisco.com/ParksandRecreation/ParkPages/CreveCoeur>

Walk your pooch around this beautiful 320-acre lake – lots of trails throughout the park, enjoy the picturesque "Dripping Springs" waterfall. 270 W left on Dorsett Road to the park entrance.



Mallard Lake & Trail

Flat, paved 2.6 mile trail around Mallard Lake and through natural, wooded areas including an attractive bluff and small spring. This trail also inter-connects to Creve Coeur Lake trails and Katy Trails, so if you feel like making a day of it – or taking a longer walk – it's all right there – waiting for you.



Stray Rescue
OF ST. LOUIS

\$50

Adoption Fee

APRIL 2015

Special Offer to SWCDP

\$50 adoption fee also applies to "long timers" & "bonded pairs". Just be sure you mention SWCDP when you apply.



BACK IN BLACK

Sleek. Chic. And oh so sweet.

Stray Rescue of St. Louis

is offering **\$50 adoption fee** for Black or Mostly Black dogs and cats (Brindle Kids Included) for the **ENTIRE MONTH OF APRIL!**



Together, we can Save Them All



**Spring
Time
Great Time
to Adopt**

Looking for love

Whether you adopt, foster, help with Buddy Walking program, or help in other way – check out the events and happenings – and available doggies at

www.strayrescue.org

**Ten Year
Anniversary**



2006 - 2016

Lots of Fun Possibilities

Southwest City Dog Park will celebrate our Ten Year Anniversary in 2016. That's right around the corner!

We plan to make this a very special occasion. This event is our chance to tell our story to the community at large – and help promote all the positive things about dog parks.

Some of what we do, will depend on the size and quality of the volunteer committee assembled. We believe this type of event should be highly publicized, include a variety of events and features – and maybe create a video of the day to be posted on our website.

We also plan a written report of our ten year history, how we got started, and all the building blocks and volunteerism along the way.

10-Year Celebration Event Committee

Want to be part of history?

Once our 2015-2016 Season opens, we will be forming a committee to specifically handle every aspect of our ten year celebratory event.

All types of skills and knowledge will be needed

Organizing, making phone calls, developing events, games, activities, public relations, marketing, keeping up with variety of details, coordinating volunteer jobs, work assignments for event (prior, during, afterwards), research, writing, taking photos, making a video, shopping for deals, managing supplies, requesting donations . . . and more

To serve on this committee, sign up on Volunteer Page
WWW.SURVEYMONKEY.COM/S/SWCDPVOLUNTEERSIGNUP

Or contact Judi at

willow.nic07@yahoo.com

C.A.R.E.



Coalition for Animal Rescue and Education

C.A.R.E. headquarters are located at our 155 acre facility where we provide rescue services, no-kill shelter facilities, medical care, socialization and adoption opportunities for dogs, cats and horses. C.A.R.E. also provides spay/neuter programs for pet owners in financial need and community outreach education to schools, organizations and groups.

C.A.R.E. provides rescue and adoption services to animals in need. As a no-kill shelter, we accept animals rescued by citizens and volunteers while supporting all shelters, animal control units and other rescue organizations. Our community outreach programs work to educate children and adults on the joys of responsible animal ownership. Through communication and cooperation, we find secure, long-term homes for adoptable animals after they have run out of other options.

<http://www.caretakersnetwork.org/index.htm>

Creve Coeur Park is Beautiful

How 'bout a run/walk around the gorgeous lake?



**Saturday, June 06, 9:00 AM
13725 Marine Avenue
Maryland Heights, MO**

FUNDRAISER FOR C.A.R.E.

\$20 fee for registration before May 16, 2015.
\$25 fee for registration on Race Day, June 6, 2015.
Pick up for tee shirts Friday, June 5th, 12-6pm
at Tremayne Shelter, Creve Coeur Park
Also race morning, June 6th beginning at 7:30am.

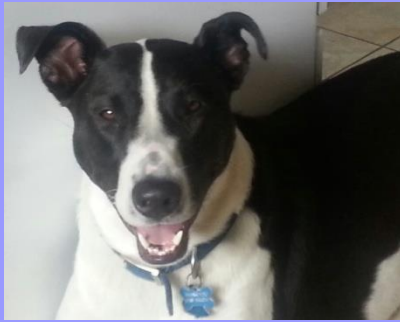
Register at this link

<http://www.onestoprace.com/search/event.aspx?id=31361>

Could You



Please



Wrigley

SWCDP Member

Needs Temporary Home

My name is Wrigley; I have been playing on the **SWCDP** playground since 2013. Recently, I overheard my human say that he might have to find a temporary, part-time home for me. Yikes! At first, I was very scared – what the heck did I do?

But – being a reasonable guy – and understanding that “temporary” does not mean forever.... I thought I would do some leg work for my human – and network with my dog park friends and acquaintances – just in case a dog park member might have room for me – temporarily, of course. We are trying to make plans for May or June, maybe for two months, 60-90 days tops. I know that my human loves me to pieces and this is hard for him – but we both know that we will be together again on a full time basis after my human takes care of a few personal things.

I am a young Terrier/Boxer mix, almost 2 ½ years old and a well mannered boy. People say that I am very good natured.

I know how to keep my cool – and really –

I just want to please everybody. I weigh about 80 lbs but I know my place – and I wouldn't wreck your stuff. I like my playtime and usually get at least one good walk or exercise activity of some kind each day. I also like the down time – I know how to chill out. I sleep through the night – and love a long afternoon nap – especially after a good play session. Relaxing is really great!

You might appreciate knowing that I am totally house broken – I'll let you know I have to go. If I tap your nose with my nose while you're lying down, or if I come around with a whimper, or lead ya to a door.....I have to go. I think you will get my drift in time. I just won't go in your house. I know to take my business outside.

I usually eat cafeteria style, my human leaves food out and I munch as I feel like it – but I'm sure I could adjust to a scheduled feeding time if that is how your pack eats.



At the dog park, I play with lots of dogs; some of my best pals are Leroy, Maggie, Floyd, Cowboy, Captain, Calvin, Chloe, and Luna...



and doggies with similar play styles. Gosh, I'll play with anybody – I just want to be a good buddy. But I do have a good sense about figuring out the big dogs, active dogs, shy dogs, playful dogs, old dogs. I know it important to show respect to the bigger and smaller dogs – and to be honest – I just know how to adjust my play nicely to their circumstances.

I love my human and my life – and just want to help us get through this time – so things can get back to normal as soon as possible.

If you think I might live with your pack on a part time and temporary basis, even a few weeks would help – please send an email to our SWCDP President – and she will coordinate a conversation with my human, Jim.

willow.nic07@yahoo.com

Try Me – You Will Like Me
How About a Practice Sleepover?

I'm also available to for a one or two night sleepover, just to be sure I fit in with your pack. I can bring my food and toys and hang out with your pack before making any longer term plans.

Let's practice!



March 2015 ... Page 11

PATIO UMBRELLA NEEDED

For Upcoming Season

If you are cleaning out last year's stuff – or buying new things for your backyard – please keep SWCDP in mind. We always need umbrella's for our patio and due to the heavy usage, high winds, etc – we prefer the sturdier, hand-cranked rather than the lighter weight pop ups. Also, easier to crank than climb up on a chair to raise or lower, as needed. Contact Judi – willow.nic07@yahoo.com



Twice per year, we have human-only events, our We Luv Our Volunteers party, February & our GMM, May.

If we have any ballot issues this year – you will receive information prior to the meeting so that you will have time to think about how to cast your vote. Ballot issue outcome is based on members in attendance at the GMM. You must be present to vote. Meeting details are being developed now – but the GMM is usually broken down into 4 parts: 1) **Pre-meeting social** with snacks – opportunity to turn in your membership application & pick up season tags. 2) **A speaker** (not yet booked but under consideration: a) Police or Park Ranger to discuss trespassers and other park issues, b) Dog trainer to discuss how to safely break up dog fights) 3) **SWCDP management portion** will address past & future activities, projects, including a financial report, proposed improvements, volunteer needs, and more. 4) **Voting** and door prizes



GMM

General Membership Meeting

Meeting details will be sent to you in early May; currently under development. Plan to pick up your SWCDP membership tags for the 2015-2016 Season before meeting. SWCDP merchandise available for purchase; special orders taken.

MARK YOUR CALENDAR!

Thursday

May 21, 2015

Buder Elementary School Cafeteria

5319 Lansdowne Avenue

(off Macklind, between Devonshire & Sutherland)



COMING SOON

Changes to Membership Process

READ USER GUIDE

Is SWCDP for you?

KNOW THE RULES

Always looking at continuous improvement opportunities - we are considering changes to membership processing and upgrades for database management and security. The first change is to immediately request a photo of each member dog, solo – no group shots. Attach a hard copy color photo to your membership packet (*Joan will scan into SWCDP database*).

If you plan to pick up your tags at the GMM (5/21/15) . . .

Please do not mail your application; keep it with you. Bring paper work to GMM. Hard copy apps available, if you prefer to complete at GMM. Be sure to bring appropriate vaccine records, dog photo and check.

Photo will be a requirement in 2016-2017 season; a request for 2015-2016, so we can all get used to doing so, and we can work out the kinks, if any. **We need your cooperation on this.** We'll continue to provide updated Dog Rosters on-site, but dog photos will remain in database only. Will help visually identify dogs who do not easily pop up with a word search.

We are thrilled so many members choose to re-join each year – and equally thrilled to see, and meet, so many new members each season as well. Members who have been around for a bit, know that SWCDP is completely dedicated to a safe and fun playground for EVERYONE. But with so many paws and feet using our facilities, **we must have rules; members must follow such rules.** Otherwise, we would have chaos – and trouble. Only a very small percentage of members seem to disregard the rules in a variety of ways. In particular, this year, we have had the gate code given out quite frequently by members. This has created a lot of work – and problems – and we are greatly disappointed in the few who have so blatantly disrespected the dog park. As a result, significant changes are in the works, to be discussed at the GMM. We ask every member, new and not-so-new, to read the SWCDP rules – **KNOW WHAT YOU ARE SIGNING** – and agreeing to – before you submit your 2015-2016 application. If you do not agree with, or are not willing to abide by **SWCDP** rules, please, consider finding a different dog park going forward. Read User Guide, too.



Secretary Report

By Joan L (Rusty, Casey, Bisky, Caika)

Membership Changes Applications Tags

You will receive a new application for upcoming season, via email (*US mail for those without computers*) – mid-late April. Please note one significant change. Going forward, we ask for a photo of each dog requesting membership. No group shots, please. One photo showing full body & good face shot. Attach photo to your application, we will scan to database.

You may pick up your tags at GMM on May 21; tags not picked up will be mailed. If you plan to pick up – you MUST bring your paper work with you, don't mail it ahead of time. This will save volunteer time and postage cost.

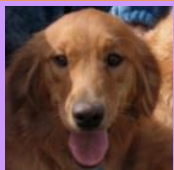
Photo Requested, 2015-2016 Season

Photo Required, 2016-2017 Season

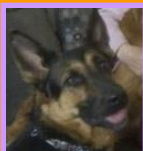
Learn more about upcoming changes by joining us at our annual General Membership Meeting (GMM) Thursday, May 21, at Buder Elementary School (*GMM details to be sent closer to event*)

Bisky's News

Bisky has been pretty busy since the last newsletter.



She has gotten her CD and has 1 leg toward her CDX title. She got 2 legs toward her novice Rally title. She obtained her novice agility title and 2 legs toward her novice jumpers title. My little girl has been doing so well. At the Golden Retriever Specialty she got a toy from GGRR, her rescue, since she took 1st place.



Caika's News

Caika has been in rest mode for the last 3 months. She has 2 bulging discs so hasn't been able to do much. She did get her CGC. Caika is being honored by the German Shepherd Club at the end of the month for the many titles that she has received. My friend, Ilona, who gave me Caika when she passed, would be so proud of her girl.

SWCDP 2014-2015 Season Closes April 5 at 10:00pm



As we wrap up our eighth season, we have **639** dogs belonging to **451** memberships.

We stopped accepting new applications in February.

Watch for plenty of new faces next season. We already have 88 requests for new membership. This is the highest level of membership inquiries that we have had in the February-March period and we have not even closed for renovation yet.

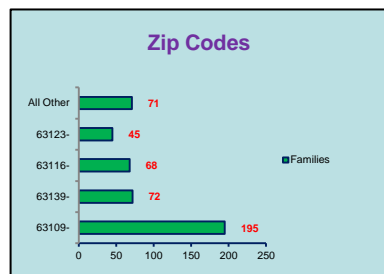
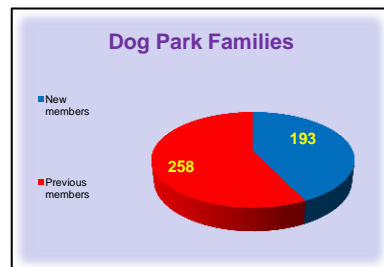
We expect lots of returning members as well as an ongoing influx of new 4-Leggeds, too.

Please watch for email updates as it relates to the opening date for the 2015-2016 Season. Strength of turf will dictate our opening date, somewhere between June 1-9.

Till next time . . .

Joan L

(Rusty, Casey, Bisky, Caika)



Enjoy Spring Break

secretary.swdogpark@gmail.com

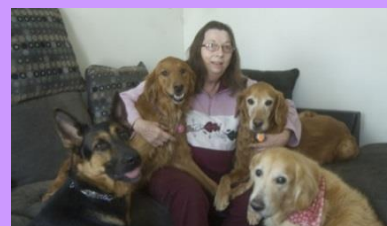


Joan's Pack



Pack Updates

We lost Rusty in December, Please see his Rainbow Bridge tribute - next page.



Caika, Bisky, Joan, Casey, Rusty

Rusty



My Perfect Puppy

By Joan L

Rusty was about 6 months old when my friend, Lorraine, found him running near the Meramec River in Bourbon, Mo. Apparently, someone had dumped him. We had just had our Pom put down & were looking for a friend for our Collie, Kelly. When we saw Rusty, my husband, Ray, and I both fell in love with him. Before long he was known as our 'Perfect Puppy'

Rusty learned so fast, he always wanted to please. He was always in bed first and lay down on Ray's pillow. When he heard Ray coming to bed he would look into the hallway and wait until Ray got close to the bedroom, then he would lay his head back down, pretending he was asleep. Over time, we got Casey; Rusty tried to train Casey to be perfect, but she had a mind of her own. No such luck. Casey would, *always*, steal food if I left it on the end of the table. She also would not get the newspaper from our front lawn, as Rusty happily did every day.

Casey would wait for Rusty to bring it in and then take it away from him.



Rusty & Casey became BFFs



Kissing Allie



About 6 months before Rusty died, I came home one day & he didn't meet me at the door.

I walked into the family room and saw my 'Perfect Puppy'

with his head in a bag of potato chips. He had the most surprised expression on his face. He was caught. It wasn't always Casey stealing food.



Partners in crime

The summer of 2014 he started to get down in his rear. By late September, he was getting pretty bad. I took him to Hydrotherapy and was walking him every day, but he got steadily worse. X-rays didn't show anything. Not even arthritis. He was 13 and could no longer get up by himself. They vet thought it was probably a tumor on his spine. I picked a day in November. I gave him his favorite treats all day, basically made him a king for a day. The vet had to carry Rusty to get him into the office. He put a blanket on the floor for Rusty and I sat on the floor next to him with his head in my lap. I continued to give him treats until he went to sleep. It is so hard to lose a member of your family.

Rusty's Last Photo



Hangin' With His Girls
Bisky, Caika, Rusty, Casey

I told the rest of my pack that Rusty went to Rainbow Bridge and he was playing ball with Daddy. Casey has really missed him. That was her buddy.



Dooley

Adopt Me, Please?

This goofy dude is named Dooley! He is house trained and crate trained. He is approximately 1 year old, 55 lbs, and up to date on all vaccinations, Heartguard and flea treatment, and neutered.

Dooley is good with people and other dogs.

He can run around outside and play hard or be content with just chewing on a bone and

lounging around the house. Dooley loves to snuggle, but also really likes to go for walks. He is fairly confident. Vacuums and other things don't even bother him.



Have you met Dooley on SWCDP playground?

SWCDP Newest Member

Dooley joined our dog park, as a foster, in late February. He hopes to make new friends on the playground while he looks for his forever home. Temporarily living with Jax (Doberman) and Ellie (Terrier Mix)

Dooley enjoys playing fetch, tug-of-war, and playing with stuffed animals. He knows the command for 'sit' and is working on not pulling while being walked. Dooley is going to need some training and he is very strong, but so eager to please and learn. He is very curious right now, and he would like to have a friend at his new home.

Do you have room in your heart & your home for this goofball? If so, you can fill out an application for him through

Gateway Pet Guardians

<http://www.gatewaypets.com/adopt-a-pet/adopt-a-pet-in-st-louis/>



Would you like to speak with foster family?

Contact Judi to coordinate
willow.nic07@yahoo.com



**5321 Manchester Road
St. Louis, MO 63110
(314) 664-7398**

You may have heard the stories over the years, about the woman who single-handedly fed and later rescued hundreds of starving and stray dogs living on the streets in East St Louis. Well, this is her organization; it has grown by leaps and bounds. Starting in 2001, P.J. made the trip across the river from her home in St. Louis, with bags of

dog food in tow. She fed every stray dog she could find - paying for the food out of her own pocket. And so it continued for nine years. Gateway Pet Guardians was formed and today they go through 1000 lbs pet food per month and rescues at least 300 animals annually.

Check out pets waiting for adoption

<http://www.gatewaypets.com>

Meet Maizie

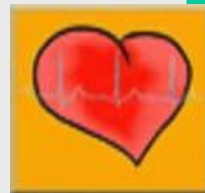


SWCDP Puppy

What is PDA?

An unclosed hole in the aorta

Before a puppy is born, the fetus's blood does not need to go to the lungs to get oxygenated. The ductus arteriosus is a hole that allows the



the blood to skip the circulation to the lungs. When puppy is born, the blood must receive oxygen in the lungs and this hole is supposed to close. If the ductus arteriosus is still open (or patent) the blood may skip this necessary step of circulation. The open hole is called the **patent ductus arteriosus - PDA**.

http://www.cvm.umn.edu/vmc/prod/groups/cvm/@pub/@cvm/documents/asset/cvm_asset_317435.pdf

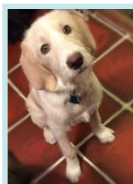
Maizie – One Lucky Girl

It would have been easy for this little girl to have fallen through the cracks. Sadly, it happens every day. Too many dogs for adoption, never enough help or money.

In Fall of 2014, Jae J (Tillie) knew she wanted to adopt... Tillie needed a playmate and another 4-legged would complete the family nicely. One of Jae's contacts, the Director at Five Acres Animal Shelter, informed Jae that a litter of puppies had just arrived. All the puppies were very cute, of course, and they were said to be Basset Hound and Spaniel mix. Most of them had short Basset Hound legs but Maizie's legs were a little longer and she looked like a better match to play with Tillie.

Maizie was adopted the 1st week of November but that first night Jae discovered she had worms, prompting a quick trip to the vet. After an exam, it was discovered that she had PDA, a defect in her heart. Without surgery, Maizie did not have long to live. The surgery was expensive and this posed a terrible decision for Jae. Within 24 hours of adoption, Maizie was returned to the shelter – Jae did not want to get too attached – not knowing what Maizie's future might be. But it was too late.

Jae said "she had already imprinted her big paws into my heart". So Jae kept calling and asking about Maizie, trying to find a

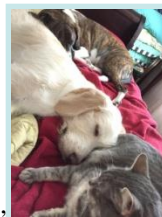


way to help. She looked into crowd sourcing and veterinary teaching hospitals trying to find a way to get her operation done.

Finally, Five Acres Board of Directors agreed to let their vet do an ultrasound to determine whether the PDA was fixable with surgery. Once they saw that Maizie was a good candidate they agreed to cover the expenses of her surgery. Maizie went "home" to live with Jae and Tillie and together, they awaited surgery. And hoped. On December 3 – Veterinary Specialty Services (VSS) did the surgery.

Maizie recovered quickly and started growing like a weed. At 6 months old she is several inches taller than Tillie and outweighs her by at least ten lbs.

Now settled into her forever home, Maizie is very affectionate to Tillie and Jae. She wants to be lovey to the cats too,



but most days - they don't want anything to do with her. She is a somewhat goofy dog – and floppy and clumsy, like any puppy not used to her legs.



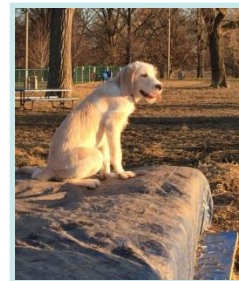
We wanted a playmate for Tillie – and boy do they play. They love running around the back yard and wrestling... mostly on Jae's bed, often pushing her off.

Maizie loves the dog park and even on her first visit, was not at all intimidated by other dogs.



She ran right in and wasn't scared by even the biggest dogs.

Friendly and energetic, the hardest problem Jae has now is getting Maizie to listen to her while playing at the park – Maizie is just having way too much fun to listen to any human.



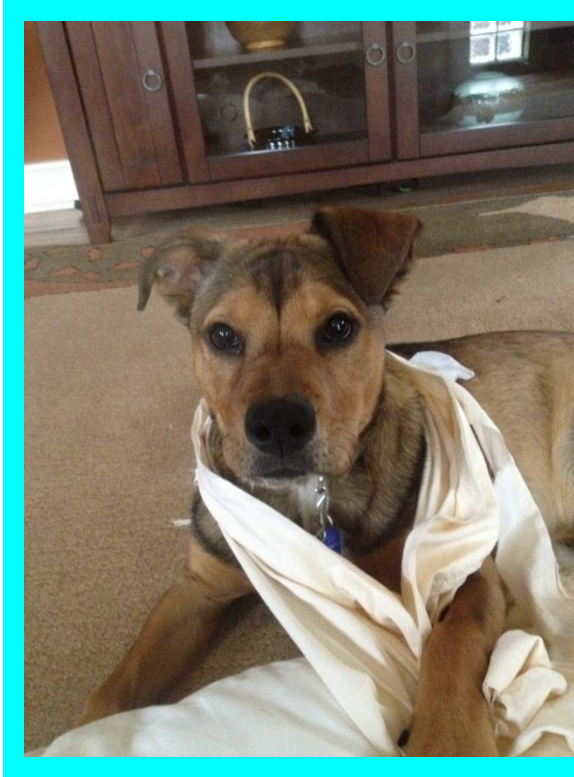
Five Acres Animal Shelter is the only no-kill animal shelter in St. Charles County, MO



<http://www.fiveacresanimalshelter.org/index.html>

Rainbow Bridge

Jake



Rest in Peace, Sweet Puppy

Nov 2013 – Mar 2015

Only 16 months when he passed

Jake' short life . . .

By Cyndi P

Jake was a rescue dog found by a fellow co-worker. I was asked to adopt him, as I was a previous dog owner and at the time was alone. Jake and I filled each other's gaps. He brought life back into my home and for that I will forever be grateful. He was a playful, yet loving soul. His vision of life was to run, jump, be mischievous and a bit destructive sometimes. He was a very smart dog, and I spoke with him often. He loved his chew toys.

Unfortunately, on March 7th after his annual visit to his Vet, Jake pushed past me while I was getting the mail and ran into the street where he was hit by a car. He was a trooper throughout the ordeal. Getting into and out of the car and walking into the Vet office of his own volition, although he was limping and in a great deal of pain. Thankfully the Vet sedated him and that eased his suffering. The x-rays were not hopeful, so while Jake slept I decided to put him down. I was there by his side, stroking and talking to him. He passed peacefully. He was a really good dog and my son, Kyle, and I will miss him. Jake had a fun loving nature, his devotion and love for us was unmistakable; he loved every second of his life. We loved him dearly.

Jake, have fun with Grandpa and Uncle Kenny. I know you are giving them a bit of your devilish trouble in a fun sort of way. Ken will be delighted to have your company.

\$30,000 Luxury Dog House - Dream on . . .



Samsung Electronics one-off prize at world's largest dog show in March 2015 (currently not for sale)

Crufts Dog Show

<http://www.crufts.org.uk/>



Treadmill & Hot Tub

TV in Bedroom

Two main rooms. One contains a padded sleeping area with silver fabric, 'dog-proof' leather buttons and bone-design pillows. Other is the sleeping quarters, with a wall-mounted Tab S so dogs can watch TV. The tablet can also be used for two-way communication with owners.

A 'push-to-woof' call bell acts as a tannoy and lets dogs summon their owners. Dog operated snack dispenser - dogs can treat themselves.

Treadmill outside so they can work off the treats and take a bath afterwards in the 'hot-tub'. Finishing touches include a large window, fire retardant carpet, paw and bone print wallpaper and skylight.

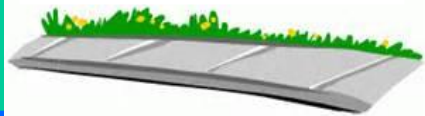
Do You Remember?

Very wet, water collected creating little ponds, attracting ducks; slick and steep hill, very slippery, difficult to get good traction or manage overly excited doggies, eager to get to their dog park.

SWCDP Front Prior to Sidewalk Project



Sidewalk Project 2014



A Major Dog Park Improvement

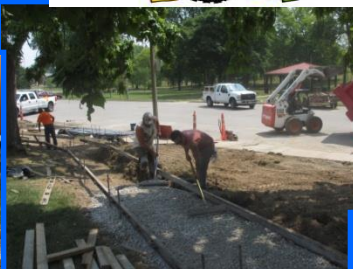
Southwest City Dog Park benefited from the recent City park-wide sidewalk improvement project. **Thanks to City Alderman Larry Arnowitz and St Louis City Parks Department** – funds were set aside for a complete sidewalk, ADA ramp, and front gate area landing for our dog park. We are very grateful for these major improvements.



Thank You



CONSTRUCTION ZONE



Patio & Dog Wash Flooring

Made Possible By



Thank You, Matt

SWCDP lucked out in many ways this year, including meeting Matt. Matt is a SWCDP member (*Jax, Ella, Dooley*) and co-incidentally was the City Engineer assigned to Willmore Park sidewalk project. From day one, Matt's dedication to the project was evident. We will always be grateful for his willingness to see the finer details, balanced from a user and engineer point of view.

Matt is responsible for keeping the project on track and adjusting



quickly as changes or decisions were needed. No question – we have a much better end project both in front entrance area as well as inside the Dog Wash and Alternate park areas.

Stika Brothers Cement Contractor

did a fantastic job on the SWCDP front entrance area; and while they were at it, responded to our request for a patio & dog wash flooring, by giving an amazing and very generous discount.; saving SWCDP not only funds but precious volunteer time & energy. Dream becomes reality.



Thank You, Stika



Thanks to all

SWCDP did not use any operational funds for the patio & dog wash flooring. Deeply discounted Stika work was paid for with the balance of funds raised in 2012-2013 from SWCDP initial Dog Wash fundraiser.

Remember

these important contacts

Lost or Found Pets



Primary Resource

<http://www.stllostpets.org/>

a collaboration of the Animal Protective Association (APA), St. Louis County Animal Care and Control and the Humane Society of Missouri (HSMO)

90% of lost, stray and unwanted pets in the St. Louis area end up at one of these three agencies, so if your pet is missing, there is a very good chance they could be at one of 3 shelters mentioned

Additional Resources

<http://stlouis.craigslist.org/laf/>

<http://www.facebook.com/groups/STLMOlostfoundpaws/>

Rainbow Bridge

Dexter

“Leather Boy”

Cozy Snuggle-Bug
Silly and Persistent

2006 - 2014



Dexter, silky-soft Cocker Spaniel, was destined to be the little brother to 3 older sisters, Dana, Steffi, & Riley. Dexter completed the family pack when he was picked out at an adoption event based on his “sheer cuteness” in 2007. Little did anyone realize at the time, Dexter’s cuteness would keep him out of the dog house more often than not. Dexter had a big, loving heart, was always in a good mood, and was up for anything his humans wanted to do. He could always sense when his humans were sad, and was there to comfort and snuggle them. Always.

Dexter was relentless in his pursuit of food – anybody’s food...he really was a little pig. Riley used to eat leisurely, cafeteria style, until Dexter moved in; she learned quickly to eat fast, or lose it. A constant beggar, Dexter would curl up next to the humans when they were eating on the sofa, pretending to snuggle, but really waiting for a morsel to drop or licking the plate when backs were turned. It was nothing for Dexter to climb up on a chair to better reach the food and once during a party, Dexter reached up with his paw and patiently worked until the food dropped off the buffet and he could gobble it up before getting busted.



Don't know what
you talkin' about



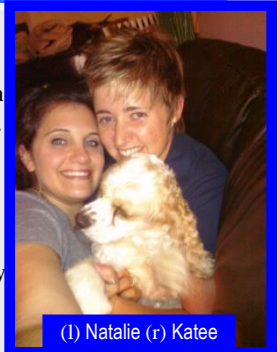
Riley would say that Dexter was a bit needy, but they loved each other more than they would like to admit. Curled up together for a nap

was a common scene. At the dog park, they looked out for each other; this was their bond. Dexter loved to play ball – that was his delight – and the thing he did most at the dog park. That is, until one day, he met a little girl named Lucy, a cute Cocker Spaniel with loads of personality. They really hit it off.



Dexter & Riley

Dexter was in pretty good health until an irritable bowel disease and protein losing enteropathy, both managed with medications and B-12 shots. However, the week before Christmas, Dexter’s health took a downward turn and his Vet, Dr Albers, referred Natalie and Katee to VSS (Veterinary Specialty Services). VSS determined exploratory surgery the best option because his case was just not straightforward.



(l) Natalie (r) Katee

Dexter was still healthy enough to be a candidate and surgery was immediately. Natalie & Katee stopped by VSS and spent some really nice time with Dexter the day before the surgery. He was in very good spirits but they believe that Dex knew it was their last time together. Surgery was deemed a success, but they received a call later that evening that Dexter had experienced a sharp decline, a stroke or blood clot, and that they better get to hospital right away. Sadly as they rushed to be with Dexter, and *only minutes away*, they received another call that Dexter had gone into cardiac arrest and could not be saved. After they arrived, they were taken to “the room” were you go when your pet has passed away. Dexter was wheeled in on a little cart. He looked very peaceful, covered in a blanket, he was still warm and soft. Dexter felt and looked just like himself. The moment was deeply sad, intimate and moving for Natalie and Katee. They are so incredibly grateful to have had that time with Dexter.

Dexter always wanted to help his humans, he was willing to chase the leaves while they raked, or pick up dropped food while they cooked. He was very helpful that way. But mostly, Dexter loved to snuggle, snuggle, snuggle. Even in car, the humans loved stroking his silky hair as they zipped around town running their errands together.



Dexter didn’t like power tools or unexpected loud noises but he mostly disliked suitcases. They were foreboding and big; they signaled lots of human hugs, kisses, & cooing followed by his transport to a caregiver and his humans disappearing – sometimes for days. Suitcases were bad news for Dexter. Dexter earned the nickname “Leather Boy” because of his fondness for eating leather products, any belt or shoe would do fine, thank you. Dexter also had very refined tastes – and frequently chose high-end designer handbags, shoes & boots. A beautiful Kate Spade bag was an exquisite and very satisfying chew. But Dexter would only chew one shoe or boot and leave the other untouched. Dexter was kind that way.



I didn't do it

Show Me Your Tongue



Mine is Blue

Sophie



BFFs

Maddi & Layla

At the Gate

This is a very busy spot – please do not “pile up” at the entry area. If you see several dogs going in or out, stay back a few feet – give them plenty space to go through – then continue with your approach.

Recently a human was bitten when she tried to separate dogs who did not like being crowded with a pile of overly excited 4-Leggeds.



Happy Tongues

Dexter & Riley



Nice Pose

Reyna

Take Turns . . . Always the right time to follow the rules

Many of our dogs are at their most excited state as they are coming into



THEIR dog park. We owe it to our dogs to create a happy and safe play environment and that includes showing courtesies as we come and go thru a very busy entry area.

Be Alert

Watch gates carefully, do not allow unattended dogs to slip through; only dogs with their humans should be in the entry area.

Leads, Collars, Tags

We are still seeing leashes strung all over the place. We recommend that you get in the habit of keeping your leash with you – as the City law and SWCDP require.

Please do not come into the dog park if your dog does not have a current season tag. We are dealing with enough confusion about non-members invading our playground – when you are tagless, you dump the burden onto your fellow members to monitor more closely.

Top of the World

Tucker & Tidus

