



Newsletter

Spring 2013

www.swcitydogpark.org

Spring

Spring

Spring

Spring

President's Message

It's spring – yes, really, it is – finally. I started writing this newsletter surrounded by a foot of snow on the fifth day of spring. Quite odd posting floral graphics and spring thoughts while my feet were still tucked away in my nice warm boots. But, it's spring – yes, really, it is.

Normally, I don't like spin – *unless I'm using it* – so here goes. Your SWCDP President urges you to think about our annual renovation period as “**Spring Break**” rather than “dog park closing”. Now, doesn't that sound better? **Spring Break** is filled with joy, expectations and adventure – not dread, fear, and frustration. Take a look at the suggested alternate activities throughout the newsletter. There are things to do while on “**Spring Break**”. Why not use this time to get out of a comfort zone – and try some new activities?

SEARCHING FOR experiences to feature in Summer Newsletter; tell us how you spent “**Spring Break**”.

On behalf of your 4-Legged (s), we ask each of you to set aside a little human time to participate in two annual activities: SWCDP Member Survey and SWCDP GMM (General Membership Meeting). Yes, we do know time has a high value, it's precious; but with maximum member enjoyment as our ultimate goal, your input is important as we strive to remain one of the best dog parks in the local area. And maybe one day – even earn recognition as “Top Dog Park” regionally or nationally.

We continue to development our **Five Year Plan** –

and this is where your input is so critical. Choosing the best projects, *if any*, with member input will guide us to the most meaningful improvements. With volunteer help, I am willing to lead the initiatives that bring us the most significant park improvements.

We have done a lot in the last couple years, so Season 2013 – 2014 is a time to kick back – and enjoy. We can do many future things from operating funds and small fund raising projects or a combination of large-scale fund raising and obtaining grants, etc.

Renovation, and upgrades for the upcoming season are already in the works. BIG DIG III is done, the dog wash is on its way to becoming a reality, and the turf seed is in. Get ready for a few surprises & an awesome season!

Willow
Dobie Girl



Regards, Judi



Our New Garden

Front Garden Gets a Makeover



Greeting you upon the 2013-2014 Season opening will be a fresh, new front garden. We have cleaned it up and are in the process of upgrading the area so that it will be more welcoming – to the humans – and at the same time provide consistent greenery and interest and color that changes with the seasons.

We currently have an abundance of flowers which bloom during the 2 months we are closed – and then we have mostly an uninteresting garden the rest of the time. We will add water loving evergreens and flowers across the front section of the dog wash. We want mostly perennial flowers, rather than annuals, and we want to disperse the blooming activity throughout the year – not just spring time. All plants and shrubs must be reasonably self-sufficient. We shall organize a gardening committee to share the tasks of keeping the gardens in shape throughout the year – so if you enjoy gardening – and have been looking for a dog park volunteer task – this could be the right choice for you.

Shrub and Flower Donations

Sunday, May 5

10:00am – 2:00pm

Could you donate a plant or flower to help the dog park stretch our funds? Maybe when purchasing for your home, you could add one more item for the dog park. Just drop it off on Sunday, May 5 – we will organize the donations and plant them the following week. Let's make this a dog park community project. **Please check with your nursery about the appropriateness of the plant before purchasing.** Thank You!

What We Need

Informal – Casual

Evergreens, water loving, low to mid height
such as: azalea, false cypress, yews, boxwood, twisted willow, pussy willow, witch hazel, spice bush, inkberry, button bush

Perennials, easy to maintain
such as: Hosta, black eye susan, echinacea, lily of the valley, ferns, cannas, iris, cardinal flowers - summer blooms, fall blooms, winter blooms

Annuals, we will take a few for color interest – but we get a better bang for buck with perennials, one planting, ongoing return.

What We Do Not Need

Formal – Structured

Flowers that require pinching dead heads, or high maintenance

Shrubs or bushes that are fussy to grow

Day Lilies, Tulips, Daffodils (we have some and plan to divide and spread)

Note: Better to donate one more mature plant than 2-3 tiny ones, so that we can jump start the new garden and see it velvetize within a season or two.

OMG! OMG! OMG! OMG! OMG!

My Dog Park Is Closed What To Do? What To Do?



Think of SWCDP 4-Leggeds singing this Donna Summer tune
Lyrics tweaked for SWCDP by Judi (Willow)

I Will Survive



At first I was afraid, I was petrified,
kept thinking I could never live
without dog park at my side.
But then I spent so many nights,
thinking about last year
and I grew strong and I learned to
lose my fear.

So I'm back from another place.
I took a stroll and saw my friend
with that forlorn look upon his face.
I had to change that goofy look
I had to make him copy me
Because I know in just 2 months
new season starts & we'd be free

Go now silly fear, walk out that door
Don't turn around now
'cause you're not welcome anymore
Were you the one who tried
to break me with "Closed" signs
galore?
You think I'd crumble?
You think I'd lay down and die?

Oh no not I. I will survive.
Oh as long as dog park opens soon
I know I'll stay alive.
I got all my life to live
and I got all my love to give.
and I'll survive. I will survive.

It took all the strength I had not to
fall apart.

Just trying hard to mend
the pieces of my broken heart.
And I spent so many nights
just feeling sorry for myself.
I used to woof and shake
but now I hold my tail up high.

And you see me, my new attitude.
I'm not that bummed-out psycho
pooch
obsessing my dog park brood.
And so there are things that I can do
On a leash I'll be
but saving' my real energy
For dog park friends like me.

Go now silly fear, walk out that door
Don't turn 'round now
'cause you're not welcome anymore
Were you the one who tried
to break me with "Closed" signs
galore?
You think I'd crumble?
You think I'd lay down and die?

Oh no not I. I will survive.
Oh as long as dog park opens soon
I know I'll stay alive.

I got all my life to live
and I got all my love to give.
and I'll survive. I will survive.

Go now silly fear, walk out that
door
Don't turn 'round now
'cause you're not welcome
anymore
Were you the one who tried
to break me with "Closed" signs
galore?
You think I'd crumble?
You think I'd lay down and die?

Oh no not I. I will survive.
Oh as long as dog park opens
soon
I know I'll stay alive.
I got all my life to live
and I got all my love to give.
and I'll survive. I will survive.

I WILL SURVIVE

... and you will too!

Check out the song on YouTube
and feel free to sing our version –
nice and loud, you will
feel much better, promise.

FREE

Dog Parks
Check 'em out

Lucas Garden Park

1234 St. Charles St.
St. Louis, MO
(314) 289-5300

Paw Park

Arnold City Park
Arnold, MO
(636) 282-2380

Broemmelsiek Park

Schwede (off Hwy DD) at Wilson
Wentzville, MO
(636) 949-7475

Quail Ridge Park

I-70 & I-40 (off Callahan Rd.)
Wentzville, MO
(636) 949-7475

DuSable Dog Park

2598 N. Main St.
St. Charles, MO
(636) 949-3372

Joe Glik Park

710 East Lake Dr.
Edwardsville, IL
(618) 692-7538

Troy Dog Sports Park

1516 Alarh Drive (Rte 40)
Troy, IL
(618) 667-4900

OMG! OMG! OMG! OMG!

My Dog Park Is Closed What To Do, What To Do?

**DON'T
PANIC!**

Other unleashed fun . . .

There are several **free** dog parks which are open year round. The excitement of a new adventure is a treat for your special canine pal. Check them out – go at different times/days to meet a variety of new friends. And think of all the new smells your doggie can investigate. Unleashed and unlimited fun – for free. Glik is very small, bring own poop bags. Troy is on vet hospital grounds, call for hours, bring proof of shots.



Remember that Broemmelsiek Dog Park has the pond – our water dogs will love this – but plenty of room for romping too. A diving deck was added last year.

A favorite destination for SWCDP members, we will host a few meet ups again this year at Broemmelsiek.

Broemmelsiek & Quail Ridge close for muddy conditions

Tree Court Unleashed is fee-required but worth checking out. You can either buy a one-time monthly membership for \$33 or a 90-Day membership for \$79. Many acres of doggie fun – located approximately 15 miles from SWCDP; head out Gravois to 141, into Valley Park; dog park is next to Simpson Park. Simpson Park is awesome, has a nice lake – worth the drive.

<http://treecourtunleasheddogadventureparks.com/>

There are also several unleashed play date facilities for a daily fee, including the following: **Watering Bowl** (2 locations, Lindbergh at Lemay Ferry and Manchester); **BauserHaus** (off Manchester at Hanley); **St Louis Muttropolitan** (On Fyler at Sublette).



**Get out of your comfort zone . . .
EXPLORE SAINT LOUIS**



Things To Do

while on Spring Break



SWCDP Organized Events

Wednesday

April 24

5:00 – 7:00 pm

Bring your pooch

Hang out on the patio, drink some wine, have a snack

Winehaus

www.3500winehaus.com

*Note: This event was rescheduled from 4/17 due to rain

Saturday

April 27

8:30 – 10:30 am

(Rain date: May 4)

Second best dog park around – Let your 4-Legged play in the pond – It's free

**Romp-Swim
Broemmelsiek
Dog Park**

Hwy 40 to DD/Winghaven

Right on Schwede

Left at 2nd park entrance

Sunday

May 5

10:00am – 2:00 pm

Be part of our front garden make-over by donating a shrub or perennial flowers.

**Plant – Flower
Drop Off**

SWCDP Entrance

Wednesday

May 8

6:30 pm

GMM

General
Membership Meeting

**Buder Elementary
School Cafeteria**

Agenda
Specific Times
Reservation Form
To be sent early May

Saturday

May 18

8:30 – 10:30 am

(Rain date: May 25)

Second best dog park around – Let your pooch play in the pond – It's free

**Romp-Swim
Broemmelsiek
Dog Park**

Hwy 40 to DD / Winghaven

Right on Schwede

Left at 2nd park entrance

Saturday

June 1

6:00 am

(Targeted date,
Mother Nature will decide)

Park Re-Opens

Kick Off Event

**Weekend of
June 8 & 9**

**Info to be
Announced**



MORE Things To Do



Events Around Town

Ongoing, Weekly Activities

Saint Louis All Dogs

Annual membership
is only \$10.00
Complete application and
show proof of vaccines.

Something for everyone

Walks, social events, educational
stuff, day trips, and more

For Dog Lovers Only

www.stlalldogs.com

Sunday

April 28

9:00 am

Run with your best friend –
For a good cause

Fast and Furriest APA Run / Walk In Tower Grove Park



Friday

April 30

9:00 – 11:00am

MO Botanical Garden Shaw Nature Reserve

In Gray Summit

www.shawnature.org

**Not sure if still taking
reservations, call ahead**

\$8.00 fee

Take your dog on nice walk

http://www.mobot.org/iEBMS/coe/coe_p2_details.aspx?eventid=37351&sessionid=fh8eiofhmfh9fc3fh5

Saturday

May 18

8:00am – 3:00pm

Bark in the Park

Forest Park
Cricket Field

Largest dog walk and festival
in Midwest; benefits the Humane
Society of Missouri Animal
Cruelty Fund

www.hsmo.org/bark

Friday

June 7

6:30 - 8:30 pm

MO Botanical Garden Shaw Nature Reserve

In Gray Summit

www.shawnature.org

Deadline for reservations
May 31; \$8.00 fee

Take your dog on nice walk

http://www.mobot.org/iEBMS/coe/coe_p2_details.aspx?eventid=37351&sessionid=fh8eiofhmfh9fc3fh5

If you know of
any fun activities
around town

**Please post info
on our yahoo group**

<http://groups.yahoo.com/group/swcitydogpark/>



Best Wishes
SWCDP Member Engagements
In 2012-2013 Season



Brett M, Macklind, Julie B



Julie and Brett were engaged recently, on Dec 25 –what a Christmas!

They are very busy planning for a **Jan 11, 2014 wedding** and a honeymoon on a nice warm beach somewhere - probably in the Caribbean. A busy year ahead as they also plan to buy a house and tend to all the wedding plans.

Miss Macklind is not part of the wedding party – but Brett & Julie are committed to including her in plenty of the wedding photos. After all, Macklind was the inspiration for the wedding color theme - black and white!



Scott G, Maddie, Momi S

Leimomi and Scott were engaged on May 1, 2012 and decided to make their wedding date, August 31, 2013, a family affair. They will share the date with Scott's parents 50th wedding anniversary and grandma's 100th birthday. Bringing families & cultures together from NJ to Hawaii – there will be lots of celebrating.

Scott won a free trip so they will have a June pre-wedding vacation on isle of Greece, in Santorini and then honeymoon north of Cancun in August at the Riviera Maya Resort.



Kara R, Fozzi, Brooks L



Last spring Kara and Brooks got engaged on April 28 and the big day is coming up fast; they will be married this summer on **July 13**. The date is also Brooks' (deceased) grandmother's birthday.

With the big day fast approaching – they are still debating the honeymoon destination. Brooks wants to visit the Dominican Republic and Kara is lobbying to “eat their way up the Amalfi coast in Italy”. We'll have to see how their first married activity turns out – and where they land for the honeymoon.

SWCDP Members

Special Deal

For YOU

How about a new
adventure for your
4-Legged during our
Spring Break?

For April & May only.
SWCDP members will
get a 22% discount on
the daily daycare fee,
compliments of

STL Muttropolitan

Reservation preferred,
but not required,. You
MUST present the
green SWCDP member
tag along with proof of 3
shots **DHLLP**, **Rabies**,
and **Bordetella**. Dogs
must be **spayed** or
neutered; minimum age
is 6 months.

\$15.00 Day
April and May

Webcam
Watch the play

Show your
SWCDP tag

St. Louis Muttropolitan

5280 Fyler Avenue

(at Sublette)

St. Louis, MO 63139

314-647-7911

www.stlmpg.com

After announcing the engagements of 3 SWCDP couples, a closing paragraph was written just for fun about “hey, although these six people already knew each other and joined the dog park as couples – meeting someone special at the dog park – **could happen**.” Such a playful prediction had to be scrapped the very next day when the following happened on our doggie playground. **For real...**

Making Friends Is Not Just For 4-Leggeds!



Todd & Caroline
Lucy, Leo, Joey

On a fall Thursday – November 11, 2010 to be specific, Todd was enjoying his usual visit to the dog park with his 4-Legged, Leo and, coincidentally, Caroline decided to take Joey, her 4-Legged, to the park as well. The two of them – the 2-Leggeds, not the 4-Leggeds, struck up a conversation and hung out while their doggies played. Gee, they thought, “this was nice” – and both of them, it was admitted much later, returned the next day, in hopes of a continued conversation. Nope, no connection.

But then, on Saturday, they saw each other again – and this time prolonged the hanging out quite a bit. Todd and Caroline decided to share phone numbers, and go for a run together. Their 4-Leggeds approved and so, it was “on” – and they have been together ever since. For months Todd, Caroline, Leo and Joey enjoyed the dog park and last year they added Lucy to their pack.

It was a glorious sunny day on Friday, March 29, 2013, and going into the Easter weekend, the pack was at the dog park for a routine play date. Everyone was happy romping around – the 4-Leggeds, not the 2-Leggeds, when Todd gave Caroline a beautiful ring and asked her to marry him.



Now, everyone was quite excited, 2 and 4 Leggeds alike, and we were able to get a family photo only minutes after the engagement became official. Todd and Caroline said the dog park is a big part of their lives, and since they met at SWCDP, getting engaged at the dog park just seemed like the obvious – and maybe best place – for such a joyful occasion.

Their wedding is planned for June 2014 – but with such breaking news, there is still much planning to do.

See, it can happen!

Best Wishes

On behalf of all SWCDP members, we wish our engaged couples the very best. Woof Woof Woof

Secretary Report

By Joan L (Rusty, Casey, Bisky)

THANK YOU

We Luv Our Volunteers



We picked up **7** more new members in February – so our final count for the 2012-2013 Season is: **442** memberships with **170** of them being new families.

We currently have **630** 4-Leggeds.

We hope to see all of you for the 2013-2014 Season when we return from **Spring Break**. Everyone understands new applications and new fees are required for the upcoming season since we never pro-rate the membership fees.

Applications will be sent on May 1 via email, if provided, otherwise, snail mail. Applications will also be available on our website, Yahoo Group files, and the application box on May 1.



You may also pick up your tags – and save SWCDP the expensive postage cost – by stopping by the Membership Table at our GMM.

**2013-2014 Season
Application Process
Begins May 1**

secretary.swdogpark@gmail.com

Till next time. Woof, Woof, Woof
Joan L
(Rusty, Casey, Bisky)

SWCDP Annual Membership Survey



Open April 26 thru May 5

Many dog park topics are covered in our survey – your opinion matters. Please invest a few minutes of your time to help make **SWCDP** the best it can be. The items showing strongest interest may be put to a floor vote at the GMM. Let your voice be heard – fill out the survey today.

SWCDP GMM General Membership Meeting



May 8, 2013

A variety of reports and updates will be shared; Attendees will cast votes on several items as gleaned from the survey interest. Attendees have chance to win door prizes. A GMM report will be sent to all members with voting outcomes in June.

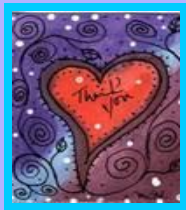
Reservations Required

Invitation with more details and instructions for reservation will be sent one week prior

Thank you
Southampton Neighborhood Association
for ongoing sponsorship and friendship



We Luv Our Volunteers



3500 Winehaus provided a great venue and contributed to the door prizes with

Three \$10 Winehaus coupons



Jenny R (Augie, Sylvia), Vicki L (Jasper), Steve S (Cinnamon, Gus), Jo M (Lucy), Dave Z (Brandy, Boo), Joan R (Max), Karl L (Sasha), Joan L (Rusty, Casey, Bisky), Kay J (Camano, Gus), Bob H (King) were all prize winners.

Prizes



Jo gets the booby prize
All in fun!

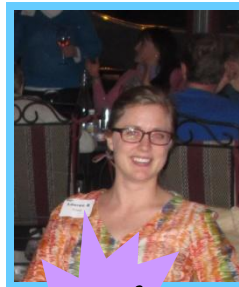
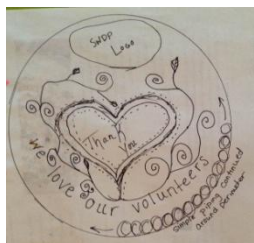
Jenny R – Nylon Bag
Vicki L – Nylon Bag
Steve S – Nylon Bag
Jo M – Stuffed Toy
Dave Z – Winehaus Coupon
Joan R – Pawsitively Fantastic
Karl L – SWCDP Hoodie
Joan L – Winehaus Coupon
Kay J – Winehaus Coupon
Bob H – Doggie Peanut Treats

Thanks to Joan L
for providing
the nylon bags
and doggie treats.

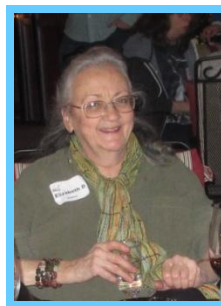
Great Wine

Our volunteer thank you party was a huge success; about 40 SWCDP members and several friends from Southampton Neighborhood Association, our sponsor, joined in the celebration. Ten people won prizes, and everyone enjoyed the wonderful wine or other drinks along with appetizers, pasta and salad, only to finish up with an excellent homemade cake, made by one of our members, a pastry chef,

Lauren R (Frieda)



Goodies



and take home a party favour made
Elizabeth D (Samy).

Joan wins the big prize, a shopping spree for Max.

\$50 Gift Certificate



See shopping photos
on following page

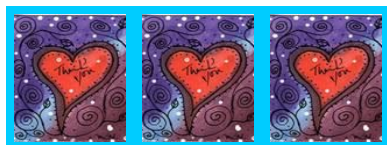
Big Prize

We Luv Our Volunteers!



More Party Pics

A big thanks to every one who donated time, energy, cash, goods and services during the 2012-2013 season. You all know who you are. We thank you all for helping us make – and maintain – SWCDP as one of the best dog parks in the area.



Another One Down!



Maggie recovering

Our rock n roll girl, Maggie (humans Mark and Dorothy), suffered a leg injury and ended up with an ACL tear.

Around the first of December Mark noticed Maggie was favoring her leg. Off to the Vet for an exam and x-rays but they could not figure out what was wrong. The Vet recommended 3 specialists, and Mark took Maggie to **Veterinary Specialty Services**, and VSS identified the ACL tear in 5 minutes.



On March 18, Maggie had **Tibial Plateau Leveling Osteotomy** surgery - just like Mabel (Jerry & Sally) had months ago.

Maggie is currently in a slow recovery, adding more minutes to her short walking routine each week. Last we heard from Mark is that Maggie is “back to being bored, pesty, and thinking she should do what ever she wants”. Go Maggie!

Maggie - speedy recovery
Woof, woof!



5600 Eichelberger St
St. Louis, MO 63109
314-353-1411

Shopping Spree For Max



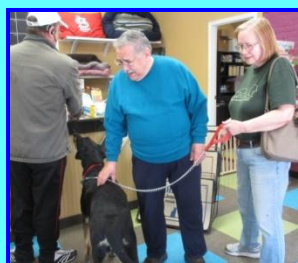
ARRIVAL

Let's get this party started

Max had a blast sniffing his way around the store, enjoyed lots of attention – and ended up – after much shopping – with just the right treat. Like humans opening nice and necessary gifts like socks or sweaters – Max appreciated all the sensible offerings – but come on people – you can't blame a guy for going bonkers over the duck feet, can you?



A new collar?



MORE, please
Max's pick

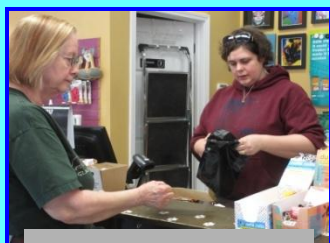


I'm waiting

You have my attention



What about a mat?



CHECK OUT

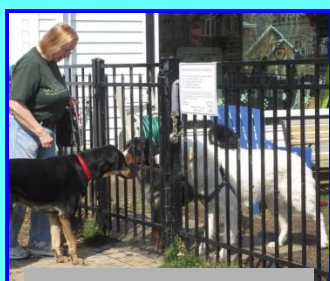


Great chomping!

Hmm, quite intoxicating



Nutritious food anyone?



GOOD BYE
New friends



I'm in love with duck feet



YUM

Thank you
Pawsitively Fintastic
for donation



Fluffy toys?
Come on people!



Rainbow Bridge

As a youngster, Lucy was one of StrayRescues first rescues. She was adopted quickly and lived in "forever home" for eight years, until the first human baby appeared. Lucy was booted out and sent packing back to StrayRescue because she was a bit too curious about the new sounds and smells – especially the nasty diaper pail.

Everyone was concerned that after living in one home for so long, placement in a shelter might be too traumatic for Lucy. So, StrayRescue placed Lucy in a loving foster home with Robyn. Knowing Lucy's penchant for smelly things, Robyn kept the trash outside – but Lucy did like to sniff it! The transition to foster care was ok, but Robyn said "Lucy was a bit sad at first. She spent a lot of time at the back gate, just staring for a long time – waiting for her family to pick her up." Over time, Lucy settled in, and even made herself comfortable on the couch.

After six months, an elderly lady offered to try Lucy for a home visit. Robyn, being an awesome foster Mom, dutifully, delivered Lucy to the woman. Robyn recalls, "I cried all the way home, but I knew it was the right thing to do." The woman called her the next day and said "Honey, I think you need to pick up your dog. She misses you." Robyn was so excited; she paid the adoption fee immediately "because she was MY dog! We weren't ever going through that nonsense again."

When Robyn adopted a puppy

named Charlotte, she officially failed as a foster mommy for the second time. Robyn said Charlotte was clueless and Lucy "took Charlotte under her wing and taught her how to be a dog. If you wanted to pet Charlotte, you had to pet Lucy first; if Lucy okayed you, then you could pet Charlotte."

More fond memories from Robyn:

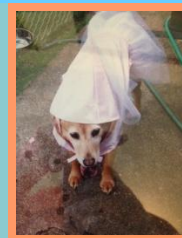
"Lucy was the best dog I ever had; she was sweet and very loyal. She just wanted to be loved. It had to break her heart to be given away but I like to think that we made up for lost time.

Didn't matter which room I was in, she would just come and sit – including when I showered, Lucy would sit at the tub, waiting patiently. Lucy also created a nest in the bottom of the closet that was her bedroom and safe spot. When she was tired and ready for bed, she would stand up, stretch and bark that it was time to go to bed. That meant I had to be in my PJs and in bed so she could get her rest!

Lucy loved chicken jerky treats & dingoes; she had to have them. Lucy had a dingo addiction; my Mom helped her break the habit while I was out of town. If you needed Lucy do anything, she would do it for chicken.

Lucy enjoyed simply hanging

*She will forever
be our pretty
Princess*



out in the back yard, going for a ride in the car, and walking-anywhere. In a pinch, we could take a quick walk around the block, but boy, if I left the gate open, she would walk herself over to Carondelet Park.

Lucy especially loved going to the dog park and visited many times. She was older when we joined but Lucy delighted in sniffing the grass, walking the perimeter and meeting other dogs. Lucy was not going into the old dog's section, no way! She could handle being with the puppies and big dogs; I think it amused her.

Towards the end of Lucy's days, she had to struggle with getting in the car, but that didn't slow us down - if you said dog park she knew she was in for an adventure! She would walk up to random people and stand there to get petted.

Lucy left her forever home Feb. 9th after developing tumors which spread from mouth to hips. She started not being able to eat or enjoy going out anymore. It was just time to go, but Lucy will remain in the hearts of her family forever.

90 Days of Renovation

Mid-March to mid-June



We had a fantastic crew on April 6, 7, 13, & 14

BIG DIG III, turf tilling, aerating, and seeding were all completed on schedule and without incident. Our volunteers gave it their all – and we expect good things for the new season. The “bones” of the Dog Wash are in and we shall work on the finishing elements until completed. We will have a few volunteers working on an assortment of tasks in May, and will call for a clean up crew just prior to our season opening. **NOTE:** We seeded on 4/14, same as last year, as of 4/24 the seed has not yet germinated. We are waiting for Mother Nature to do her magic, consistent warm weather would certainly help. June 1 opening will be determined by the condition of the turf and strength of new grass.

We plan to tell this awesome volunteer story in a photo essay for the Summer Newsletter – and a sneak peak at the GMM.



Our volunteers rock!



Will You Raise Your Hand For

2013 – 2014 Season?

Our dog park has room for all: those who only want to pay their annual membership fee and not get involved further; those who cannot offer time and talent but donate cash and goods for special projects; and those who contribute their time and energy in a variety of ways as a volunteer. And some who do it all. We love our volunteers!

To keep our dog park vibrant, active, and appealing to 2 & 4 Leggeds, we need ongoing help. If we do not do the work – it simply will not get done. We currently have several volunteers serving in most of the areas below but we need more. By sharing tasks we can generate good synergy, fresh ideas, and ensure that no member becomes overloaded or burned out. Lots to do and we need you.

Communications and Merchandizing

- Web update, newsletter design & layout, events calendar, article writing
- SWCDP gear order processing, selling at events

Resources and Research

- Find best prices, including wholesale vendors, negotiate contracts
- Identify info for goods, services, educational, articles, etc
- Organize volunteer crews for projects or events

Safety and Incidents

- Check grounds for safety, keep first aid & cleaning supplies stocked
- Review and rule on incidents, complaints, and watch list

Events and Education

- Organize and run social or sports activities, on and off site
- Organize and run educational or informational activities, on and off site
- Organize and deliver SWCDP donations to Bi-State Pet Food Pantry, etc
- Assist with 2 annual events: GMM and Fall Celebration

Grounds and Turf Management

- Beautification: garden upkeep, weeding, etc
- Turf renovation, season start-up, ongoing care
- Repair and maintenance: gate, fence, equipment, systems, etc

Fund Raising and Special Projects

- Organize and run small to large fund raising events, grant writing, etc.
- Participate and research short to long term special projects, as needed

On-Call for Work Crews

- Be on call list for small to large work crews, as needed

If interested, send a note to Judi N (Willow)

willow.nic07@yahoo.com

Successful and fun fund raiser . . .

MORE Works of Art

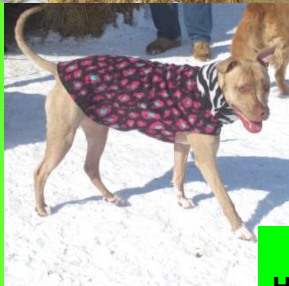
Our 4-Leggeds Wearing Their
Custom Sweaters by Phan

**Poodle Chic
Polly Angel Sydney**



**George
Hey Big Boy
St Louis Cardinal Fan**

**Nala
Stepping
Out**



**Junior
Handsome in grey**



**Jenga
Neon Zebra Stripes**



**Junie (left)
Juju (right)
Gorgeous florals**



**Xander & Beacon
Doggies in dots**



**Jasper (above)
Popular SWCDP
Sweater**



**Ginger
Cupcake Girl**

**Spencer &
Beatrice (right)
Lookin' good
and attentive too**



**Dogs in frogs, too cute!
Gus (top left)
Ollie (top right)
Willow (right)
Waits for more customers**



Keep these
contacts handy . . .

*Remember these
important contacts*

Lost or Found Pets

<http://www.stllostpets.org/>

<http://stlouis.craigslist.org/laf/>

<http://www.facebook.com/groups/STLMOlostfoundpaws/>

*Polly gets her
Spring cut*



Does your 4-Legged get
a warm weather haircut?

Send us photo for
summer newsletter

willow.nic07@yahoo.com

Give us shelter . . .



Winter Shelter stored until November
Bye Bye

**Send info for
Rainbow Bridge memorials,
or interesting stories or photos
to Judi (Willow)**

willow.nic07@yahoo.com

SPRING

So long 2012-2013 Season



Gracie
Sweet Senior



Deb T with
CiCi & Rom



Happy Luna



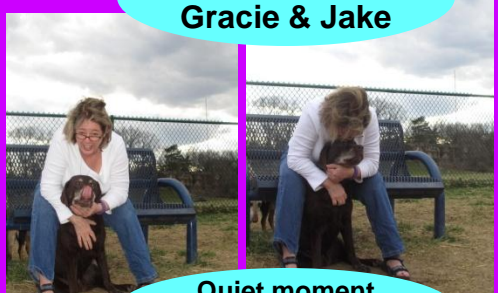
Sue M with
Gracie & Jake



CiCi
Expecting Mother
stays in shape



Unidentified butts
--but havin' fun!



Quiet moment
Gracie & Sue



Frieda
Peek-a-boo anyone?



Ebby
Enjoying the tunnel
and posing on the
pause table



Lily
Look at this face
What should the
caption be?



4-Leggeds
Making
Snow Angels

Before we dash off for the new season and warmer temps
One last look at our winter moments



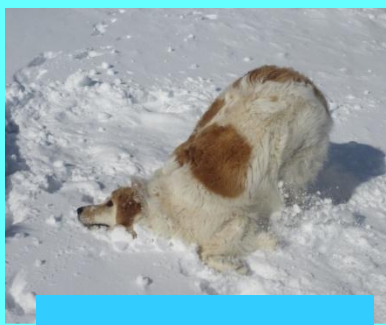
Come on Big Sis
I promise this
is a blast



Sophie wants Ginger
to join the snow fun
but Ginger not so sure



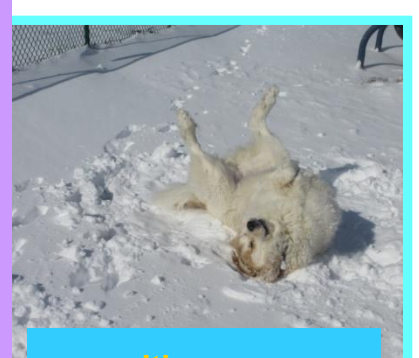
Come, Come, Come



Watch me!



All you have to
do is wiggle.
You do know how to wiggle
don't you Ginger?



It's easy
and sooo much fun!



Ginger, a senior,
rediscovered a
very cool play!



Aaah, those youngsters
always know where the fun is..
Ginger says, "Yes,
let's make Snow Angels"

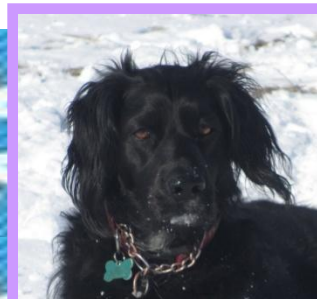


Ginger tries to
get her human Bob
to join the fun

A Little Snow Mischief

Bad Girl - Bad Girl

But, Oh, So Cute!



Featuring

Molly



Miss Molly had the opportunity to grab her human, Joan's glove – and had a grand old time with it. She played keep away, and pranced around with that glove for almost an hour. Yes, she took a few rest breaks – but she was not about to give it up. This game continued until Joan and rest of the humans lost interest in it.

**What fun it is
to be a naughty girl**

More Winter Fun

King



Nico



Nico, Samy
And Luna