



Dog Park Closure

Sunday, April 1 • 10:00pm

Park will reopen June 1 – or earlier, conditions permitting!

Spring 2012

Message from the President

We are closing for the season – for turf repair and maintenance. Instead of feeling blue about the temporary closing, let's realize that this too shall pass – and we WILL get through it, just like we did last year, and the year before, and the year before.

General Membership Meeting

Our annual GMM is in the works as we go to press – you will receive more GMM information along with your 2012-2013 application – which will be sent to you in mid-April. Complete the GMM Reservation Form, and return it along with your New Season Application. It is important for planning purposes to know if we will have 20 or 200 attendees. We are targeting the middle of May. It will be a packed schedule – program will include speakers, door prizes, lots of information about the new season, and the first announcement of our opening date – in case Mother Nature is good to us, and we can open early. Please come. We need a larger facility this year for our meeting – contact me if you have access to a large meeting room, school cafeteria, etc.

Our Budget

A big chunk of our membership fees for the 2012-2013 season are earmarked for the installation costs of our three watering stations – which will go on-line in June 2012. The 2012-2013 fees will also pay for our annual turf management contract, grounds repairs and maintenance, dog park insurance policy, and general base line administrative costs.

Our dog park will celebrate its six-year anniversary in September 2012. We are proud to say that during the first five years we did not raise membership fees. We continue to operate frugally, but with some of our operating costs increasing, the Board voted to raise annual fees \$7.00 across all three categories, but keep the additional dog fees at \$10. We believe you will agree that even after the adjustment, our annual fees remain an excellent value for our members.

Anything new and fun we wish to do will need a boost from fundraising activities or special donations, etc. We will talk more about this at our GMM and in the Summer Newsletter.

Volunteers and Dog Park Future

From speaking with many of you, I recognize that we have plenty of resources – in terms of willingness to volunteer or chip in financially for special projects. We are working on a more organized way to make it easier for you to help – and for the Board to reach out and connect. Starting with the GMM – and then more formally in the summer newsletter – we will put forth a variety of ways you can help. June will be volunteer recruiting month – so that the rest of the season we will feel secure in our plans and activities because they will be supported by our members. Some areas may be one-time help with ground projects – turf management, small construction or repair projects. Other areas may be one-time help with special events (fun or training related), or website work, or specific committee work like short and long term planning, handling and ruling on incidents, and more.

Also, we may be “closed” in April and May, but there will be lots of things happening – work on the grounds as well as planning activities for 2012-2013. If any of you want to help during our 60-day “off season” work schedule – please contact me directly, and immediately... we need help in April and May.

Membership Survey

The results of the 2011 fall survey will be sent to you in a separate document. We had a fantastic response rate – 62% – and really good ideas from our members. We plan to conduct an annual survey, each fall, as a way to keep tabs on member input which will help craft the care, maintenance, and future of our dog park.

— Judi (Willow)

Slogan contest

Southwest City Dog Park already had a pretty awesome logo – but we wanted to add another dimension that expressed the essence of our park. Our members came through with excellent ideas.

Selection Committee

Every submission was presented to the Board and Committee members without any identifiers, so we could focus solely on the merits of the tagline. The group brought their favorite selections to the December board meeting. We narrowed it down to the Top Ten, then voted on the slogan at the January board meeting.

Selection Process

We eliminated longer slogans as the font size would become so tiny that it would be difficult to read. We eliminated slogans that referred to barking or any dog behavior that had potential for a negative impression. We liked the idea of incorporating “St. Louis” into the logo and ultimately we unanimously agreed that “leashless” was the true baseline for all enjoyment in the dog park.

Popular Words

Out of 213 survey participants, 88 members offered slogan suggestions, some offering more than one idea. Here are the words that popped up the most frequently (not counting the obvious words of southwest, city, dog, or park).

Fun	23	Wag(s), Wagging, Tail	8
Unleash(ed), Leashless, Leash	21	Best, Better	7
Run, Romp	15	Free, Freedom	7
Woof, Bark	12	Party	7
Fur	11	Happy, Happiness, Yappy	6
Play	11	Good	4
Paw(s)	10	Love(s), Loved	3
4-Legged, Four Legged	8		

Top Slogan Contest Entries

Leashless in St. Louis

Lissa J (Emma)'s creative tag line won the Slogan Contest and she will receive a free dog park membership for the 2012-2013 season. Congratulations!



How did you come up with your slogan?

The survey challenged us to unleash our creative side as we thought about slogan entries which captured the essence of the dog park experience in St. Louis City. This led me to "leashless" (in St. Louis) which reminded me of the movie name *Sleepless in Seattle*. Extending the theme, the joy and excitement of *new life* that the movie celebrates seems to me what the dogs might feel when let free to run in the park with their buddies – leashless.

Tell us a little about Emma.

Emma is a black and brown furry thing, part MinPin, part Blue Heeler, but mostly Australian Shepherd. She is very social. She loves to play ball in the house – mostly because the ball doesn't go very far and it's more about playing tug. She adores chewing. Emma even plays hostess to a few of our neighborhood 4-leggeds who occasionally stop by for a visit.

How did you come to join the dog park?

I found Southwest City Dog Park – by pure discovery – as I walked Willmore Park. Emma and I joined as soon as I adopted her. She was four months old and completely fearless in the dog park. I thought we should be in the smaller dog area but she would not have it. Since then, she actually has discovered her small size and has become a little more shy, except for a few dogs that she tries to herd by biting their heels. We are still working on that – since not all the dogs like being herded.

The park is a huge blessing to me. We go almost every weekend and try to get in a few evenings during the week. Emma loves to chase dogs with balls (no interest in the ball itself). I like to watch Emma run hard – great exercise. She can keep up with the best of them but when tired has learned that it is just as easy to wait and herd them on their way back from retrieving! I think Emma and I love the park equally. I love to let Emma off the leash so she can run and play to her heart's content, and I enjoy meeting those who share a love of dogs.

What are your thoughts about the direction of the dog park?

I like the direction the park is taking – good leadership and community development. Very nice improvements – the new water stations are great and the agility course is a fun addition (though I can't get Emma to go through the tunnel, yet). The humans are very nice, as considerate and conscientious as the dogs when they first greet each other, although humans thankfully don't do the intimate smelling thing.

Our Park Has Gone to the Dogs

Sloan C
(Augie)



Christy & Glen H
(Sheba)



Claire & Bill H
(Partly)



Dave Z
(Boo & Brandy)



WORTHY MENTIONS

**A Better Time Than Your Head
Out a Car Window**
Suzanne F
(Finn, Ari, Cinco de Mayo)

A Healthy Mutt for a Healthy Butt
Erin & Dan H (Elsa, Murphy)

A Tired Dog Is a Happy Dog
Lisa L (Tez, Lucy)

For Dog's Daily Dash
Amy & Jeff V (Missy, Phoenix, Spoon)

Home of Canine Capers
Jerry S (Mable)

**I Have Just Met You
& I Love You**
Katie S (Oakley)

K-9 Social & Athletic Club
Nancy K (Daisy)

**One Good Sniff
Deserves Another**
Terese E (Junior)

Run for Fun
Piera & Dennis C (Twinkie)

The Paws That Refreshes
Bev D (Maggie)

Where a Dog Can Be a Dog
Teresa M (Scout) / Leslie & Nick W
(Butterscotch, Scooter)

Where Dogs Bring Their People
Anne & Stephen P
(Buddy, Sandy)

Wigglin' Willmore
Mary M (Finnecan)

Will-More Fun Follow?
Pat B (Clare, Ceilidh)

Woof Spoken Here
Caroline & Kent G (Gumbo, Zoe)

Other Finalists

We received several variations of the three-word string similar to *Wag Sniff Play* and several variations using *unleash/leashless*, etc.



**A Four-Legged
Getaway**
Kristi R (Max)

**Come Get Your
Canine Kicks**
Katie & Tim M
(Lenore)



**It's My Park
& I'll Bark
If I Want To**
Pat & Frank H
(Glacier)

**Leaps & Bounds
for Peeps &
Hounds**
Betsy G
(Mia, Marshall)



**Where Fur
& Fun Meet**
Kara R (Fozzi)

Wag Sniff Play
Tonya D
(Maddie)



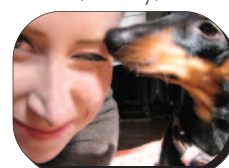
Unleash the Fun
Andrea R
(Jack & Sophie)



**Where Everybody Knows
Your Dog's Name**

Amy E
(Dewey)

Joan L
(Rusty, Casey, Bisky)



Rainbow Bridge



My mastiff Murphy was only four years old when he passed away on March 1, 2011. He was my best buddy. He and I shared a very special bond. His absolute favorite thing to do was to come to the dog park. He looked forward to it every evening. He is missed so very much.

— Connie



Riki, a fawn Boxer with a puppy mill background, made her way into my heart via the Boxer Rescue when she was 5 years old. I mostly remember Riki's kindness to the new foster dogs and puppies; each morning Riki would carefully check and lick each puppy... no argument please... and then send them on their way until evening. Riki would also "clean" the cats, much to their disgust. Her loyalty to me will not be forgotten. Riki lost her struggle with cancer and passed over the Rainbow Bridge in October of 2011. Riki was a wonderful girl. I loved her and she returned that love.

— Mary B

If you wish to share a memory of a beloved dog, send a photo and a short description to willow.nic07@yahoo.com



Rocky was a beautiful Boxer-St. Bernard mix. He had a huge blocky head, long skinny legs and a trim body. He loved to chase balls and would spend all of his time at the dog park chasing and returning a tennis ball. He might have looked scary but he was the most loving, peaceful dog. I will miss his steady presence. Rocky was 11 years old and had developed congestive heart failure which ultimately led to liver and kidney failure. We helped him pass peacefully on November 15 with the help of the kind doctors at Watson Veterinary Clinic.

— Betsy G



Sheba (left), with Sasha

Sheba, a gorgeous Akita, considered everyone her friend. Sheba enjoyed the dog park and was 13 years young when she crossed over the Rainbow Bridge.

~o~

A Memorial to our Sheba, aka girly girl

You left in Autumn,
The leaves were turning.
I walk down roads of orange and gold,
I saw your sweet smile.
I heard your laughter,
You're still here beside me every day.

~o~

We love you and miss you every day.

— Your loving family, Karl L

*Just this side of heaven is a place called Rainbow Bridge.
When an animal dies that has been especially close to someone here,
that pet crosses the Rainbow Bridge. On the other side of the Rainbow Bridge,
there are meadows and hills for all of our special friends so they can run and play together.
There is plenty of food, water and sunshine, and our friends are warm and comfortable.*

— anonymous

Dog Park Gear

Now you can show off your Southwest City Dog Park affiliation in style!

Here's a sampling of what will be available. Come to the General Membership Meeting in May to see them all and order your favorites!

The embroidered patches are 3" in diameter, with iron-on backing. Willow shows what it might look like on her custom sweater.



Secretary's Corner



As most of you probably know, we will be closing for spring grounds maintenance on the evening of April 1, 2012. We will be reopening June 1, 2012.

This will be the beginning of the 2012-2013 Dog Park Year. I will be sending applications via email around the second week of April. For members who do not have email, I will be sending applications by snail mail.

The registration fees for the new dog park year will be as follows:

SNA members	\$32.00
St. Louis City residents	\$42.00
Non-St. Louis City residents	\$57.00
Additional dogs	\$10.00

Many members have asked about fostering dogs. We do allow foster dogs. Register the dog as a foster and send shot records. You will receive a tag. As you replace that foster with another foster, you may use the same tag number, but you will need to send shot records for the new foster. If you have any questions, email secretary.swdogpark@gmail.com.

Member Statistics for 2011-2012

Number of families	409
Number of dogs	571
St. Louis City residents	350
SNA Members	31
St. Louis County residents	59

— Joan (Rusty, Casey & Bisky)

2012-2013 Season

June 1, 2012 – March 31, 2013

Current members have first opportunity for membership. Form will be sent via direct email or U.S. mail in mid-April.

New members can apply by printing an application from our website, available in mid-April, or pick up a hard copy at the dogpark entrance after June 1.

Primary Enrollment Period
April-May 2012

Applications Accepted

mid-April 2012 through February 2013

We do **not** pro-rate fees. Each application must have full fee attached. We do **not** accept applications in March.

— FEES —

St. Louis City Residents
\$42 first dog, \$10 each additional

SNA Members
\$32 first dog, \$10 each additional

Non-St. Louis City Residents
\$57 first dog, \$10 each additional dog

Annual General Membership Meeting

MAY 2012

(seeking facilities around May 15 – May 17)

Time & location to be determined . . .

- Reservations are required so we know whether we need a room for 20 or 200.
- A reservation form will be sent to you in mid-April with the 2012-2013 Member Application. Return the form with your application.
- You will receive notice of meeting date, time and place after we collect the reservations and choose the location.
- We do not have meeting expenses in this year's budget. If we need to rent a facility to accommodate all those who want to attend, we may ask each attendee for a \$2 or \$3 donation to offset costs.

We need help to make this happen . . .

- Seeking a large meeting facility with an abundance of free parking. Do you have access to one – a meeting room where you work, a cafeteria or gym at your child's school?
- Do you have time to help with the planning or a variety of tasks at the meeting?
- Can you bring homemade baked goods for attendees to munch on?
- Can you donate a goodie as a door prize?

Why you should attend . . .

- Be in the know about your dogpark.
- Meet landscaper and dog trainer.
- Learn about season activities and ways to get involved.
- Attendees will find out if the park will re-open before June 1.
- See new dogpark logo gear. A limited amount will be available for cash & carry before and after the meeting. Or place your order!

Dynamic Program . . .

- **Mixer & Speakers**
 - Speak directly to our new landscaper and dog trainer.
 - Munch on homemade baked goodies.
 - Look at dogpark merchandise up close and order cool stuff for the new season.
 - Mingle with members.
 - Sign up for a variety of special projects and/or other volunteer activities.
 - Speakers will give a short intro and offer a formal Q&A after the mixer.
- **Board Overview**
 - Where we have been, where we are going
 - Financial report
 - New projects/programs for 2012-2013
 - New proposals to consider
 - Review of rules/regulations
- **Q&A – Open forum for members**
- **Speaker & Mixer**
 - An alternate turf vendor will speak about 2013-2014 options and offer Q&A.
 - Take one last look at the new merchandise, put in an order, and be the first to have our new dogpark gear.
 - Sign up for a variety of volunteer tasks, based on what you learned during the meeting.

We're sure you'll have some fun and leave informed!

We prefer one meeting per year, rather than asking you to attend multiple meetings, so there is a lot to pack into one event. We hope you will stay for the entire program – but please come, even if you attend only specific segments based on your interest.



Reopening

We make every effort to re-open the park prior to June 1, but if we have a difficult Spring, we may need all of April and May to grow strong turf. Plan for June 1, unless you hear otherwise. Mother Nature is our scheduler!

Board & Committees

PRESIDENT Judi N (Willow)	LANDSCAPING Jane S (Rosie, Abigail, Jack, Bill)
TREASURER Kristi R (Max)	FUNDRAISING Sloan C (Augie)
SECRETARY Joan L (Rusty, Casey, Bisky)	NEWSLETTER Phan C (Blake, Prima, Sheegwa)
INCIDENT Mindy W (Milo)	NEWSLETTER Nancy Kent • Patricia (Mocha)
Mary B (Jazz, Tristan)	<i>This is my last newsletter. It's been so much fun putting these together! Best wishes to the SWCDP and all its furry inhabitants! —Nancy</i>
Hillary M (Artemis, Rosco)	



Rover Reporter solooshunz 2 da No-Dawg-Park-Blooz

Tings 2 Doo

Beginner Dog Obedience Class

April 9 - June 4 • 7:00-7:50pm

Crestwood Parks & Recreation

Info/Register at 314.729.4860

events.stltoday.com/st_louis_mo/venues/
 show/5066465-crestwood-parks-recreation

\$54 Crestwood Residents

\$72 Non-Residents

Beginner Dog Obedience classes are now forming at the Crestwood Community Center. Handlers (age 14+) and dogs will learn the "clicker" method of training. Dogs must be at least 12 weeks old and have proof of current vaccinations. Spaces are limited and pre-registration is highly recommended.

APA's Fast & Furriest

5k Run & 1-Mile Walk

April 29 • Tower Grove Park

apamo.org/ff2012.aspx

Humane Society's

Bark in the Park

May 19 • Forest Park

The largest dog festival in the Midwest
[member.hsmo.org/site/
 TR?fr_id=1080&pg=entry](http://member.hsmo.org/site/TR?fr_id=1080&pg=entry)

American Kennel Club Museum

1721 South Mason Road • St. Louis

museumofthedog.org/fido_friendly.html
 The AKC Museum of the Dog encourages visitors to bring their canine companions with them on a visit to the Dog Museum. The Museum provides doggy treats, fresh water, and a place for Fido to exercise.

Laumeier Sculpture Park

12580 Rott Road • 314.615.5278

laumeiersculpturepark.org

Pets are welcome visitors in all outdoor areas, but must be leashed at all times. However, to ensure everyone's safety and enjoyment, pets are not allowed during special events.

Playsiz 2 Go

Free dog parks in the area to help relieve the "No Dog Park Blues" while our park is closed. We suggest you call to check on hours and policies.

Lucas Garden Park

1234 St. Charles St.

St. Louis, MO • (314) 289-5300

Troy Dog Sports Park

Route 40 at 1516 Alarth Drive

(next to RP Lumber)

Troy, IL • (618) 667-4900

Paw Park

Arnold City Park

(Bradley Beach Rd. & Jeffco Blvd)

Arnold, MO • (636) 282-2380

Broemmelsiek Park

Schwede & Wilson Rds.

(off State Road DD)

Wentzville, MO • (636) 949-7475



Bring your dog to play with her/his SWCDP pals at Willow's Swim & Romp Party in Broemmelsiek Park!

Quail Ridge Park

I-70 & Hwy. 40/61

(off Callahan Rd.)

Wentzville, MO • (636) 949-7475

DuSable Dog Park

2598 N. Main St.

St. Charles, MO • (636) 949-3372

Joe Glik Park

710 East Lake Dr.

Edwardsville, IL • (618) 692-7538

Swim & Romp Partee

You Are Invited!

Judi (Willow)

**to host 2 Get-Togethers
 at Broemmelsiek Park**

— 2 Saturdays —

April 21 & May 12

8:30am - 10:30am

(Call Broemmelsiek Hotline 636-949-7475 before heading out - the park closes to protect the turf when the grounds are wet. In case of rain-out, our event will move to the following Saturday - April 28 or May 19.)

**Free fenced dog park, 2.50 acres
 with pond. Restroom and pavilion
 on-site. Park at gate.**

Early event offers the opportunity for you to get in a fantastic 4-legged activity, and still have most of your Saturday for other activities. (This is a public dog park; expect other 2- and 4-Leggeds to join us as the morning moves forward.)

There is also a 5-acre fishing pond right next to the dog park. Feel free to "go fishin" after the Swim Party or have a picnic in the peaceful area. Your 4-Legged will be happily tired, and will enjoy snoozing at your side (on-leash).

**Children under 8 years old are not
 allowed inside the dog park - enforced
 by Park Rangers.**

Bring waste bags to pick up after your dog and a water bowl for clean water for your dog to drink. Feel free to bring your lawn chair or beach towels. The dog park has convenient parking and restrooms.

Directions: Schwede and Wilson Roads, off State Road DD. Take Hwy. 40/61, exit at the WingHaven Blvd. (Hwy. DD) interchange. Go south on Hwy. DD for approximately 4 miles. Turn right on Schwede Rd. to the second park entrance. Sign for "off-leash area" at the second entrance on the left. Follow signs to "off-leash area" - Canine Drive.



Will you raise your hand?

Here's what we need in April and May.



Can you dig it?

- We need to dig up the French drain near the primary water faucet, investigate its condition, resolve the problem, dig up excess gravel, extend the area by a couple feet or so, and re-do the surrounding paver border, etc. (Our landscaper may be delivering a truck load of gravel. If so, we can use some of it to finish off this project.)
- We need to pull weeds and mulch around trees, etc.
- We may do a few other small-scale projects in late May, depending on GMM consensus and the Board's final decisions.

Tentative date(s): April 4-12

Can you work it?

We expect strong turnout for our GMM (General Membership Meeting), and we need an assortment of helpers to work prior to, during, and after the meeting. Could you assist by...



- | | |
|------------------------|-----------------------------|
| • helping with set up | • managing our speakers |
| • signing people in | • crowd control |
| • handing out programs | • working a "special" table |
| • badges | • operating the projector |
| • door prizes | • usual meeting tasks |

Tentative date: May 15, 16 or 17

Can you bake it?

Munching on yummy homemade baked goods, like cupcakes, brownies, cookies, cakes, pies, etc., will be a nice addition to our GMM.

So we do not have too much or too little, let Judi know if you would like to bring something, and tell us what you will bring.

Tentative date: May 15, 16 or 17



Send a direct email to Judi (Willow) if you can help
willow.nic07@yahoo.com

Thank You!



Our dogpark has such active members!

We don't always see or know every-one who does these things, but **Thank You** for:

- picking up your dog's poop
- picking up other dogs' poops
- bringing in extra plastic bags
- donating dog toys
- finding lost sunglasses, gloves, keys, etc.
- filling water bowls
- planting flowers
- pulling weeds
- spreading straw around
- emptying trash bins
- hauling stuff in and out
- laying pathways
- filling fence bag holders
- donating doggie pools
- moving the pools to help the turf
- filling in holes

Thank you for just jumping in and taking care of things. Our dogpark is a much nicer place because of you!