

Southwest City Dog Park

General Membership Meeting

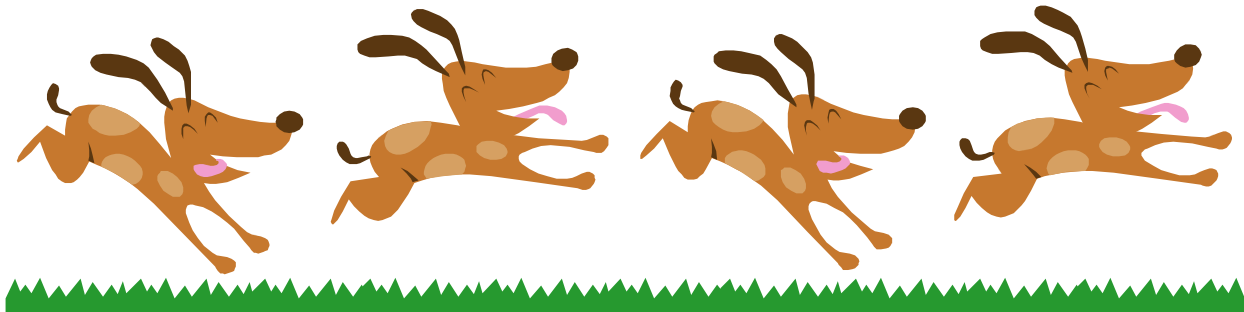
May 15, 2012
Buder Elementary School

Program Intro

6:45

6:55

Welcome



Program Intro

6:45
6:55



Nuts & Bolts

- GMM Game Plan
 - GMM - **May 15**
 - Dog Park – **June 3** (10:00am-2:00pm)
- Comments and Questions
- Votes, Critique, Sign-Ups
- Herders and Retrievers

Let's Go

Greyhound – Saluki Speed



JustDogBreeds.com

We Listened

6:55
7:00

2012-2013 Season

Improvements and New Activities
via Member Survey and Member Feedback

Let's Learn Together
Share the Dog Park in Harmony

Our Speaker

7:00
7:05

- Intro Kama Preston
 - Greater St Louis Training Club Member
 - TV, Radio, Print Ads
 - CPDT-KA
 - C.L.A.S.S
 - CGC Evaluator
 - CPR / First Aid

Kama's presentation is our appetizer – the main dish will be held at our dog park during the summer

Kama Preston

7:05

7:30

Our Speaker

7:30
7:45

Q & A with Kama

2011-2012 Re-Cap

7:45
7:50

Water Bowl Installation Update

Member Survey

Agility Introduction

Treasurer Report

Secretary Report

Slogan Contest Winner

Water Bowls Re-Cap

7:50
8:00

Hydro Dynamics Installation



Water Bowls Re-Cap

7:50
8:00

Hydro Dynamics Installation



Water Bowls

7:50
8:00

Hydro Dynamics Installation & Re-Work

- Water line to be re-connected to different water line – to ensure “potable water” status
- May 18 meeting with city plumber & Hydro
- Hydro will do re-work, no cost to SWCDP
- **Re-work scheduled between May 24 – June 7**
- Possible section off area to re-grow turf

Water Stations

7:50
8:00

Water Station Identifiers - Effective May 2012

- **Station 1** – Original Water Faucet
 - Freeze proof, use from Nov 1 – March 31
- **Station 2** – Water Bowl (no hose bibb), located next to Station 1
 - Not freeze proof, use from April 1 – October 31
- **Station 3** – Water Bowl (with hose bibb), located in back of dog park
 - Not freeze proof, use from April 1 – October 31
- **Station 4** – Water Bowl (with hose bibb), located in Alternate Dog Park
 - Not freeze proof, use from April 1 – October 31
- **Station 5** – Dog Wash (proposed 2012), located next to entrance area
 - Freeze proof, use year round

Member Survey

7:50
8:00

We want your input

- Member engagement is vital to dog park
- 2011 Fall survey – great response & ideas
- Establish an annual Member Survey – each fall
- Voting agenda to be included in survey, as well as at the GMM each year

Agility Re-Cap

7:50
8:00



Agility Update

Management Commitment

We are committed to offering an agility area and encourage everyone to try it out – it's fun. Let's spend the summer with the agility area as is, and if we need to make changes in terms of location – we will tweak as necessary. Everything can be moved.

User Donations

If we can acquire user donations – we have space for 2-3 more pieces of equipment. We only need to purchase supplies – we can make the items ourselves to save money.

Safety and User Friendly

We replaced the initial gate idea of plywood and chicken wire with a solid hinged gate – but used the garden posts and fencing around the perimeter as originally planned.

Agility Storage Area

We added a small storage area for the agility equipment and plan to add 1-2 bins to hold extra dirt. The dirt will be used to fill holes throughout the dog park, as needed. If your 4-Legged digs – you need to fill the hole.

User Responsibility

Agility users will be responsible for picking up equipment, putting in storage and then setting back up – before/after the landscaper cuts/trims grass. Schedule for the landscaper will be posted. We ask all users to take turns in maintaining the agility area.



Fund Raising

7:50
8:00

Dog Park Gear

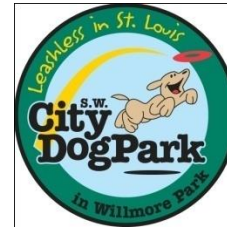
Sloan C

(Augie)



Phan C

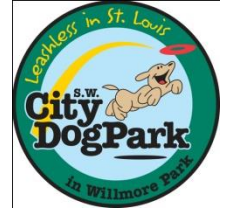
(Blake, Prima, Sheegwa)



Fund Raising



Dog Park Gear



Do you love our dog park?
Are you proud to be a member?

Let's get the word out

Please support **Southwest City Dog Park** – and help us tell our fantastic story.
Buy gear – wear your dog park gear around town – get people talking about SWCDP.

Order form is on website – and we will offer cash and carry items at the dog park on **Sunday, June 3** from **10:00am – 2:00pm** - you can see the colors and sizes in person. Additional order forms also available.

A variety of items available for immediate purchase

Special Funding

7:50
8:00



Financials - Actual 2011-2012

8:00
8:05

Revenue

Memberships	\$	16276
Donations	\$	0
<i>Total 2011-2012 Revenue</i>	<u>\$</u>	<u>16276</u>

Expenses

Landscaping	\$	9993
Membership (Insurance, Mailings, Tags)	\$	2435
Capital Improvements	\$	7325
Misc. (Consumables, Maintenance, etc)	\$	543
<i>Total 2011-2012 Expenses</i>	<u>\$</u>	<u>20296</u>

Income

\$ **4020**



Financials - Budget 2012-2013

8:00
8:05

Revenue

Memberships	\$	20675
Donations & DP Gear	\$	11450
<i>Total 2012-2013 Revenue</i>	<u>\$</u>	<u>32125</u>

Expenses

Landscaping	\$	10935
Membership (Insurance, Mailings, Tags)	\$	4000
Capital Improvements	\$	5140
Misc. (Consumables, Maint., Gear Prod. etc)	\$	8875
<i>Total 2012-2013 Expenses</i>	<u>\$</u>	<u>28950</u>

Income

\$ 3175



2011-2012 Re-Cap

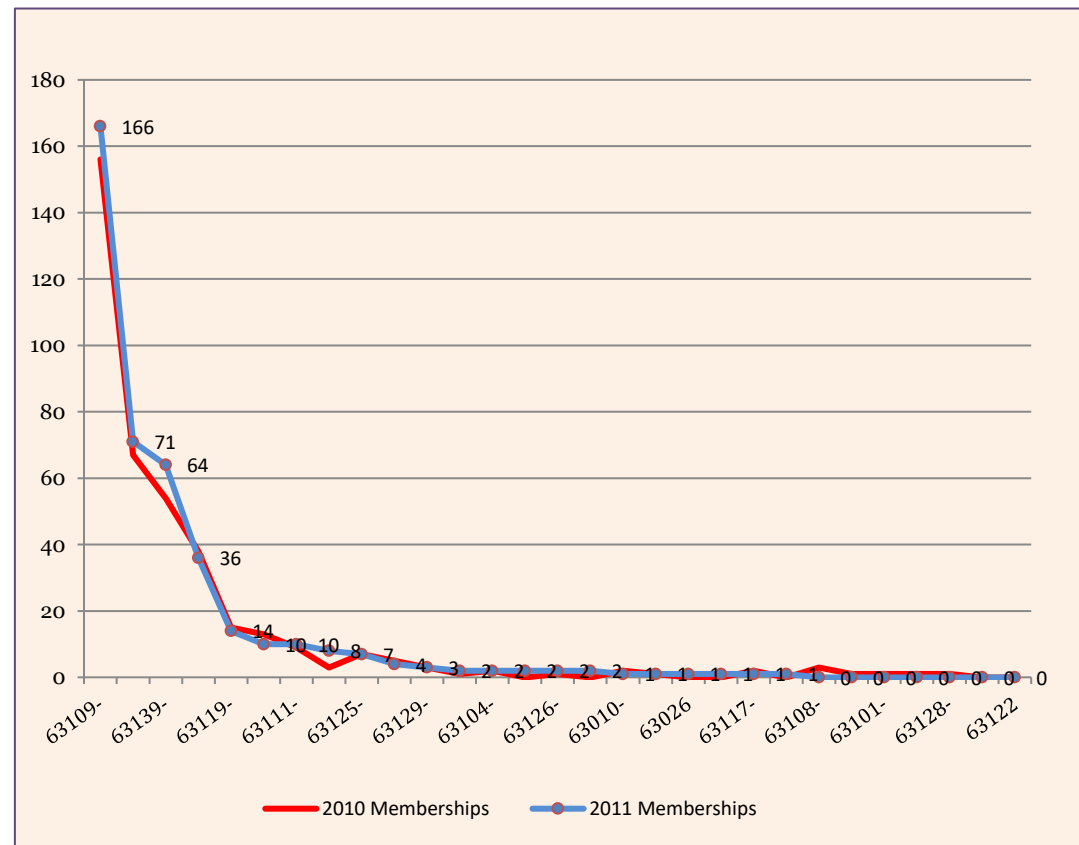
8:05
8:10

409 Households
(+1% from 2010)

154 New members
255 Prior members
578 Dogs
(+1% from 2010)

By Residence

350 St. Louis City
31 SNA
59 Outside City



2011-2012 Re-Cap

8:05
8:10

Slogan Contest Winner



Lissa Johnson

Gift Certificate

This certificate entitles Lissa Johnson to

One Year Dog Park Membership for one dog

Authorized by

Must accompany application



South Hampton Neighborhood Assn
SW City Dog Park
P.O. Box 5183
St. Louis, Mo. 63109

Expires: Jan. 1, 2013

**Vote
1**

Community

**8:10
8:20**



**KEEPING PETS AND
PEOPLE TOGETHER.**

Bi-State Pet Food

8:10

8:20



Photo by Sid Hastings Post-Dispatch

On Left

Sandy Lynn with Addie

On Right

Kylie Shafferkoetter with Bailey

About the pantry

- Why/How pantry opened
- Funding & Community Support
- Location
- Food quantities
- Qualify for help

Bi-State Pet Food

8:10

8:20

Julie Wolter

Bi-State Pet Food Pantry Board Member

- Why Julie got involved
- How people and pets benefit
- What this service means to the community
- Ask SWCDP to join partnership

**Vote
1**

Pet Food Pantry

**8:20
8:25**

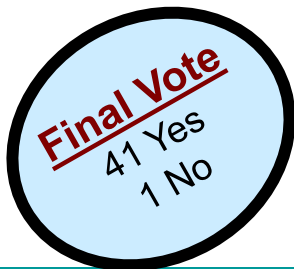


- Member participation is optional
- Bring dog food to SWCDP Saturday mornings following quarterly newsletter (dates tbd)
- Two SWCDP members will coordinate

Vote - Should we do this?

Yes

No



Vote
2

Capacity

8:25
8:30

St Louis City Ordinance 66595

- Unlimited membership (2 & 4 Legged)
- Only 100 dogs allowed at any given time
- Members are responsible for enforcement

Vote What should our cap be?

Final Vote
25 for 100
12 for 70
4 for 85

70

85

100

25

Vote
3

Dog Wash

8:30
8:40

Reason

Mud inevitable

Members, at large,
have requested it

Scored high on
Member Survey

Members willing to
fund project

Benefits

Operational year

Keeps vehicles clean

More frequent dog
park visits, less
hassle

Scope

Located right of entry

Fenced & gated

Accommodate 2
people, 2-3 dogs

Table & spray nozzles

Concrete slab & gravel

Water only, no
shampoos or chemicals

**Vote
3**

Dog Wash

**8:30
8:40**



Fund Raising Meter - as of May 1, 2012 (\$1,700)

\$500

\$1,000

\$1,500

\$2,000

\$2,500

\$3,000

\$3,500

\$4,000



Thanks Jerry & Sally S (Mable)

Vote

3

Dog Wash

8:30

8:40

- Already have **\$1,500** cash in hand; \$200 pledge
- Completely paid for by special fund raising
- Members interested in dog wash likely donors
- Use of Dog Wash - available to ALL members, FREE.
No requirement to donate – but if you think you may use it – please chip in what you think it is worth, every dollar puts us closer to completion
- Designated area near entrance



Vote - Should we do this?

Yes

No

SAFETY FIRST PROGRAM

8:40
8:50

Part 1

**Commitment to mud reduction,
where possible**

Think safety – for 2 and 4 Legged



Status

Gravel / stepping
stones in gangway

Expanded gravel
around faucet areas

City responsible for
slippery slope at
entrance – we are
trying to remedy this
and the pools of water
at curb

SAFETY FIRST PROGRAM

8:40
8:50

Part 2

Better communication

Message board upgrade



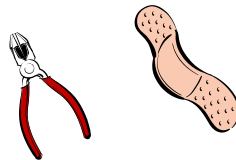
Understand dog play

Trainer sessions

Emergency resources, on site

Contact information

Emergency Kit



Learn dog CPR and more

Status

Michelle C (Jessie)

SAFETY FIRST Coordinator

**July/Aug Dog Play,
Behavior Learning**

CPR training –
offered 2-4 times per
season, tbd

SAFETY FIRST PROGRAM

8:40
8:50

Part 3

Recruit area Vets (4) as partners

One time donation (\$350 each)

CPR/Safety training, on-site

Supplies for Emergency Kit

Safety/Health article for newsletter

“Emergency” contact (offer discount – for the emergency fee only – for dog park members)

Status

First Vet Partner:

Larry Zeis, DVM

Watson Animal Hospital

Second Vet Partner:

Patrick Tate, DVM

Webster Groves Animal Hospital

We need 2 more!

Turf Report

8:50
9:05

It's Shaping Up - *Slowly!*



Turf Report

8:50
9:05

Baby Grass – Young and Vulnerable



Turf Report

8:50
9:05

Invaders!



Turf Report

8:50
9:05

Remember Those Last Few Weeks?



Turf Report

8:50
9:05

Gravel – Good!



Turf Report

8:50
9:05

Muddy Conditions



Gate: Lock & Chain Closing

Hotline: Call to check open status

Turf Report

8:50
9:05

French Drain / Gravel Crew Leaders

Bob H (King); Tom Z (Mario); Bob B (Lily)

Stepping Stone Donors
To be featured
In Summer Newsletter

Stepping Stone Leader

Linda R (Nik)

Free Astroturf Offer – Your School/Church

Ryan L (Jenga)

Our Volunteers

8:50
9:05



Prizes

9:05

9:15

Winners – **please identify yourself**, so we can feature you in the summer newsletter, send your name and photo of you with your 4-Legged (s) – a close-up shot, please, to secretary.swdogpark@gmail.com

- **Drawings**

- Patch
- Tote Bag
- Annual Membership (one dog)

- **Raffle**

- **2-Legged**, Shirt, (donated by Sloan C - *Augie*)
- **4-Legged**, Vest or Sweater, (donated by Phan C – *Blake, Prima, Sheegwa*)
- **Purina Goodies** (donated by Sarah F - *Gracie*)

New Season

9:15
9:30

Membership Empowerment

- Understand SWCDP rules
- Help enforce the rules – be consistent
- It is YOUR park

New Season

9:15
9:30

Alternate Dog Park

Formerly known as “*Small Dog Park*” and “*Special Needs Dog Park*”

- Kama/Cinder **Dog Play/Dog Behavior** ... To offer more in-depth information – and personal evaluation of YOUR dog (s) .. July/August (*dates, tbd*)
- **SAFETY FIRST** ... Pet safety, CPR, health information offered by our sponsor vets (*in-progress*)
- **Additional activities** in Alternate Dog Park ... will be booked in advance – notice published in multiple places (**VOTE 4**)

**Vote
4**

New Season

**9:15
9:30**

Alternate Dog Park

Formerly known as “*Small Dog Park*” and “*Special Needs Dog Park*”

- Book in advance – publish notice, multiple places
- Limit to 4 – 8 hours per month
- Use for either fun or informative activities
- All events approved by Board – Managed by BOD/Committee or assigned SWCDP volunteers, at large



Should we do this?

Yes

No

In Good Standing Status

- Applies to 2013-2014 Season
- Board and Incident Committee will evaluate and vote, based on:
 - Trend of Incident Reports or general complaints
 - Efforts made by owner to address/correct issues
 - Evidence of progress and cooperation
 - Members refusing to cooperate, with history of member complaints – will not be allowed to renew

In Good Standing Status

Should members be held accountable for the behavior of their dogs while at the dog park?

What do we do if members refuse to follow the rules or work through reported problems – such as get training or counseling – issue specific.

Should we initiate a “Good Standing” status for basis of renewal of membership?

**Vote in Membership Survey
(Fall 2012)**

Q & A

9:25

9:35

**Answer questions related
to Votes 1-4**

Or

Most frequently asked

[Invite to June 3](#)

Membership Discussions

10:00am to 2:00pm

Follow up to GMM agenda

Give final directions

**Filling out forms
(Votes, GMM Critique,
Volunteer Sign-UP)**

Tear Down

9:40
10:00



WOW
Baked Goodies
Delicious!

Thank YOU Volunteers – AWESOME TEAM WORK

Set up and Tear Down Teams were amazing!

We only had 20-25 minutes to tear down our meeting – box up and take our things to our cars – fold up 100 chairs, and set up all the lunch tables and benches for student use the next day.

New Season Opening

Saturday, June 2, 2012 – the season begins...

Yes, it was a long closing

Decision Drivers

- **Facts Not Emotion**. What's happening on the ground drives the decision – not our eagerness to get the 4-Leggeds on to the turf
- **Surprises and Set-Backs**. March thru May gave us many false starts or situations requiring alternate plans or acquiring different resources
- **Protect Our Investment**. Many thousands of dollars (operating cash) and uncounted volunteer hours spent for 2012-2013 season turf improvements/repairs – don't blow it
- **Be Responsible**. Make the tough call – even if it means receiving complaints from members. Do the right thing – for the right reasons
- **Accountability**. Board is accountable for decisions, BOD sets dates
- **Ensure Member Enjoyment**. Open season when critical milestones are met – to ensure a long, enjoyable season for 2 and 4 Leggeds. 😊

Pools and Toys



Hoosier – Summer 2011

We need 1 pool for alternate dog park and 3 pools for back of main dog park

The smaller pools are preferred because they will last longer – and are easier to empty. The water is heavy – and with constant dumping – the larger pools tend to crack quicker.

We need new balls, Frisbees, and tug toys, too.

As always – we will take and appreciate all donations.