



Southwest City Dog Park Supports Our Blues





W e l c o m e

Southwest City Dog Park

**General Membership Meeting
May 23, 2019**

GMM End Game



CAFETERIA LAYOUT – 8:15 pm

GMM Attendees – PLEASE HELP WITH TEAR DOWN

Here is how we found it. Here is how we leave it.

Janitor must close school building at 8:30pm

GMM Program

6:30
6:35

Program Segments

Time

OPENING: Introductions, General Info

6:30 – 6:35

TURF: Status, Improvements, Changes

6:35 – 6:55

ACCESS CONTROL: Fobs, Coming & Going,
Accountability, Security, SAIC

6:55 – 7:20

PROJECTS & AMENITIES: Completed, In-Progress

7:20 – 7:35

BOARD REPORTS: Secretary, Treasurer

7:35 – 7:45

WRAP UP: Volunteerism, Support

7:45 – 7:50

DOOR PRIZES

7:50 – 8:00

Introductions

SWCDP Board

Steve – Treasurer

- Serving SWCDP since 2012
- BSBA Accounting – CPA
- Senior Accountant, reports to Controller
- 14+ yrs non-profit accounting
- 7 million dollar budget
- Extensive treasury and cash duties

Introductions

SWCDP Board

Joan – Secretary

- Serving SWCDP since 2007
- 30+ yrs Info Technology, Database / Applications Development
- Database / Systems Mgr (top medical school)
- 20+ yrs as volunteer Secretary / Treasurer Bowling League

6:30
6:35

Introductions

SWCDP Board

Judi – President

- Serving SWCDP since 2011
- 30+ yrs recruiting, sales, marketing
- Develop policies, procedures, systems
- Volunteer leadership
- Events planning, execution, oversight
- Newsletters, newspaper column

6:30
6:35

Turf Update

6:35
6:40

Opening Day – June 1, Saturday, 6:00am

Seed Upgrade: Tall Fescue 4 Way Blend – Stenson, Technique, Padre 2 and Kingdom

Maintenance Schedule: Dog Park closed Tuesdays for 4 hrs
8am – 12pm (during warm weather months)

SWCDP Hotline: **314/567-2012** Check status of Dog Park
temp closing due to safety issues, large scale
maintenance, or extreme turf saturation

New Turf Management Approach: More seed upgrade
selection, fertilization, weed control program

Turf Update

6:35
6:40

Turf as of May 22

Main View

Alternate View



Turf Update

6:35
6:40

Turf as of May 22

Good Close Up



Patchy Close Up



Turf Update

6:40
6:55

GreenEnvy Lawn Care

Insert GreenEnvy Data

Access Control

6:55
7:20

Your Comings and Goings

- Fobs
- Entering & Leaving Dog Park
- Activity Log, Trends, SAIC Management
- Accountability, Responsibility
- Security, Trespassing

Access Control

6:55
7:20

FOB Reader



Projects & Amenities

Lots Happening!

Completed

- Fence, Gate
- Access Control
- On-line
Registration
Clean-up
- Signage
- Turf Renovation
- Rainbow Bridge

In-Progress

- Dog Wash
- Bag Holders
- Front Garden
Expansion

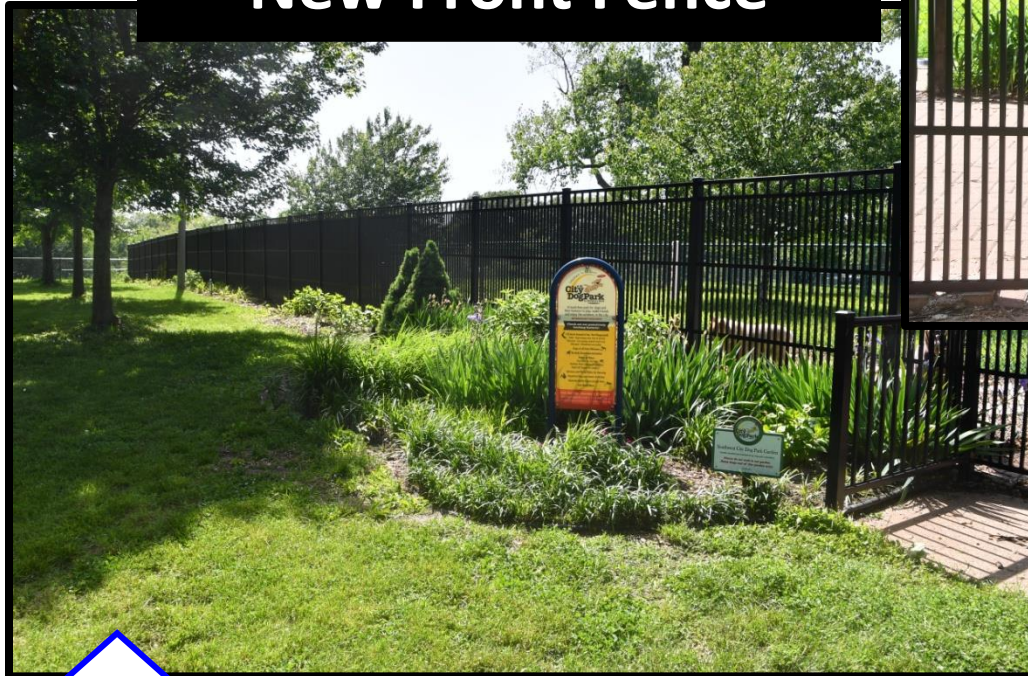
Summer / Fall

- Front Overhang
Message Board
- Table – Alternate
- Dirt Bin Repair
- Website Upgrade

7:20
7:35

Projects & Amenities

New Front Fence



New Gate & Welcome Sign



10a

7:20
7:35

New Program



SWCDP Rainbow Bridge Wall

When SWCDP 4-Legged members leave us for the Rainbow Bridge . . .

Some human members choose to leave their dog's name tag on the
SWCDP Wall as a memorial and representation of enjoyable times at the park

Friends we have cherished and lost – we will miss you

- **Must be SWCDP member same year as passing**
- **Will be retro active**
- **Use actual name tag or have special name tag made**

Project-in-Progress

7:20
7:35

Dog Wash



10c

Updates

- Faucet – repair/replace
5/29
- Boot brush – repair
Done
- Day Lily fence replaced
6/1
- Pooch sign
Summer 2019

Artist
Needed

Project-in-Progress

7:20
7:35

Table for Alternate

Do



Thanks,
Joan

Events

7:20
7:35

Fun Playground Happenings

| <u>Date</u> | <u>Event</u> |
|--------------------|--|
| Ongoing | Tiny Paws Big Play |
| June 15 | Kick Off – Make new friends |
| June 22 & 23 | Agility Intro – Try it with trainer |
| TBD | Agility Tutoring – Learn it  |
| Late Aug | Puppy Pool Party |
| Nov 2 | Fall Celebration & Halloween Party |



11a

Tiny P  *aws*

B

I

G

P

L

A

Y

4-Leggeds – 25 lbs and under

**Saturdays & Sundays
9:00am to 11:00am**

**Tuesdays & Thursdays
6:00pm to 8:00pm**

Make new friends
Play with other little ones
Celebrate tiny

Tiny
P  *aws,*



Board Reports

7:35
7:45

Secretary Reports

690 Households

(up 154 from last season)

429 New members

261 Prior members

876 Dogs

(up 183 from last season)

By Residence

571 St. Louis City

119 Outside City

43 SNA

87.39%

used online application

Membership Stats 2017-2018 Season

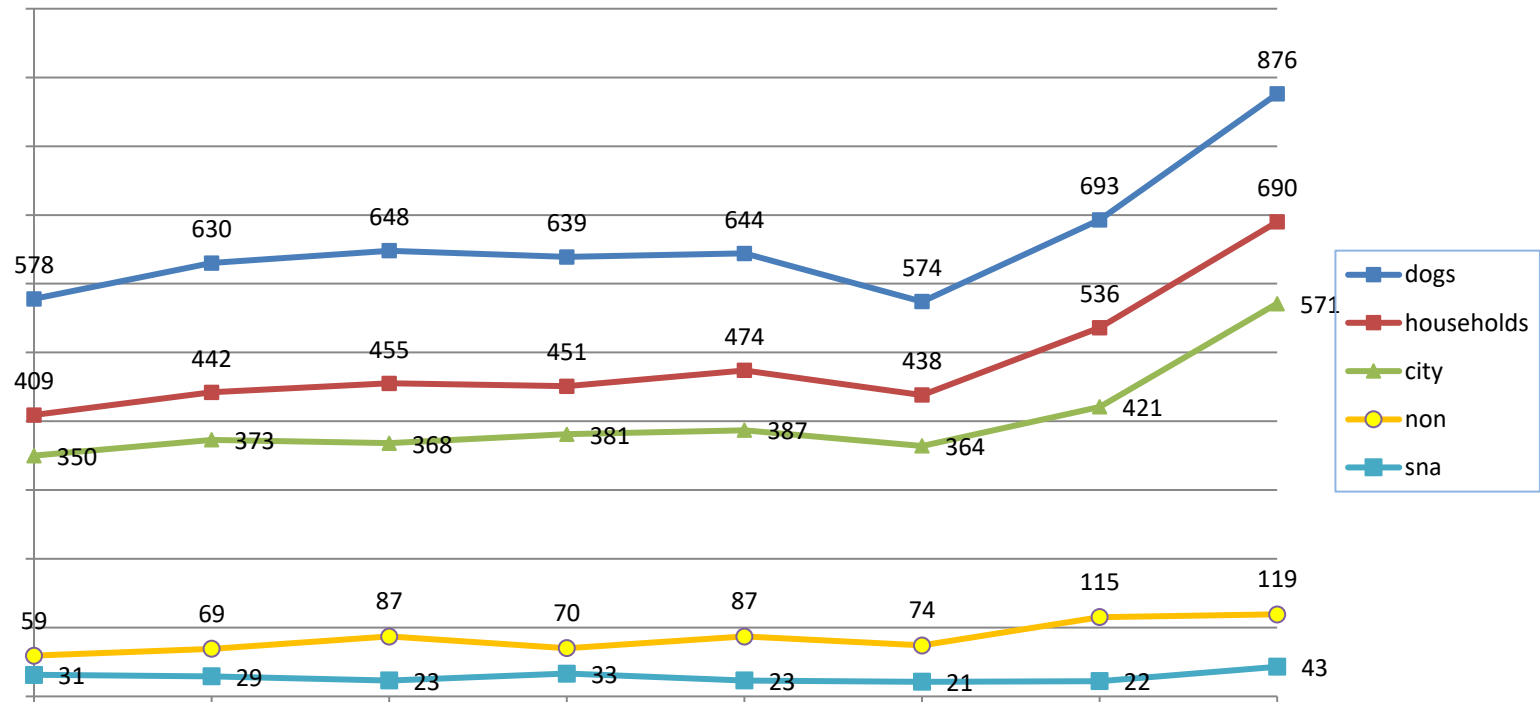


Board Reports

7:35
7:45

Secretary Reports

8 Year Membership Comparison



Board Reports

7:35
7:45

Secretary Reports

Revenue 2018 - 2019

| | | |
|--------------------------------|-----------|---------------|
| Membership | \$ | 33581 |
| Donations | \$ | 1084 |
| Grant for 250.00 | | |
| SWCDP Merchandise | | |
| 2 legged | \$ | 1029 |
| 4 legged | \$ | 0 |
| | \$ | 1029 |
| Total 2018-2019 Revenue | \$ | 35,694 |

Board Reports

7:35
7:45

Secretary Reports

Expenses 2018 - 2019

| | |
|--|-----------------|
| Yearly Landscape: Startup and Maintenance | 10,975 |
| Membership (Insurance, mailings, tags, storage, etc) | 2943 |
| Capital Improvements (Access control system) | 13102 |
| Capital Improvements (Fence) | 9215 |
| Special Projects | |
| Web Expense | 6350 |
| SWCDP Merchandise | |
| 2 Legged | 1492 |
| 4 Legged | 0 |
| | 1492 |
| Misc (Subscriptions, events, volunteer crew refreshments) | 1916 |
| Total 2018 - 2019 Expenses | \$45,993 |

Board Reports

7:35
7:45

Secretary Reports

INCOME – 2018 - 2019 Season

| | |
|----------------------------------|--------|
| <i>Total 2018 - 2019 Revenue</i> | 35,694 |
|----------------------------------|--------|

| | |
|-----------------------------------|--------|
| <i>Total 2018 - 2019 Expenses</i> | 45,993 |
|-----------------------------------|--------|

| | |
|----------------------|-----------------|
| TOTAL REVENUE | (10,299) |
|----------------------|-----------------|

Board Reports

7:35
7:45

Treasurer Reports

- **Annual Tax Return** – Completed prior to May 15th due date
- **990-N** – “E-file” required for organizations under \$50,000 revenue; informs IRS that SWCDP is active
- **Sales Tax Exempt** – 2013 approved by MO Dept of Revenue; annual “good standing filing”

Board Reports

7:35
7:45

Treasurer Reports

- **Insurance Policy** – General liability includes StL City per Ordinance 66595
- **Money Market Status** – \$20,300 balance; Interest rate 1.9818 %
- **Money Market Purpose**
 - Create savings – separate from operating funds for special projects
 - Be own funding source – no borrowing

GMM Wrap Up

7:45
7:50

We Need Your Support & Cooperation

- Volunteerism – SWCDP Culture
- Crew Needed last week May; first week June
- Pitch in with ongoing tasks
- Watch for Emails, keep records updated
- Read User Guide, know the rules, know your dog
- First Aid Kit, Emergency Numbers, Supplies
- Main and Alternate Usage
- Pool and Hose Usage

Support Your Dog Park

Attendance Prizes

7:50
8:00

Six Winners!

Prizes

- SWCDP Membership (one dog)
- \$25 Visa Gift Certificate (spend anywhere)
- Choose gift from Gift Table
Jewelry, Small Dog-Cat Tote, SWCDP Shirt,
Nylabones, Dog Toothpaste / Toothbrush

Thank Your For Joining Us – See Ya On The Playground!

GMM End Game

8:00
8:15



CAFETERIA LAYOUT – 8:15 pm

GMM Attendees – PLEASE HELP WITH TEAR DOWN

Here is how we found it. Here is how we leave it.

Janitor must close school building at 8:30pm